



Berger Realty, Inc.
3160 Asbury Avenue
Ocean City, NJ 08226
1-877-237-4371 / 609-399-0076
info@bergerrealty.com



2108 Dune, Avalon, NJ, 08202

Price \$7,750,000.00

PROPERTY DETAILS

Total Rooms	0
Bedrooms	
Baths Full	
Baths Half	
Year Built	
Type	Restaurant
Block Number	21.04
Listing #	241156
Taxes	18307.00

COMMENTS

Welcome to the heart of Avalon, known as the Circle Pizza Plaza, a prime investment opportunity in the best seashore community New Jersey has to offer. This unique property sits on just over half an acre of land and features five commercial and four residential spaces, all fully rented and generating steady income. It is currently home to five restaurants including some of...

PROPERTY FEATURES

Heating	Cooling	Water	Sewer
Gas Natural	Central Air Conditioning	City	City
Electric			
Forced Air			

CONTACT



Ask for Lauren Greiner
Berger Realty Inc
3160 Asbury Avenue, Ocean City
Call: 609-602-5960
Email to: lmg@bergerrealty.com

Scan to see Property page.



Berger Realty, Inc.
3160 Asbury Avenue
Ocean City, NJ 08226
1-877-237-4371 / 609-399-0076
info@bergerrealty.com



2108 Dune, Avalon, NJ, 08202

Price \$7,750,000.00

PROPERTY DETAILS

Total Rooms	0
Bedrooms	
Baths Full	
Baths Half	
Year Built	
Type	Restaurant
Block Number	21.04
Listing #	241156
Taxes	18307.00

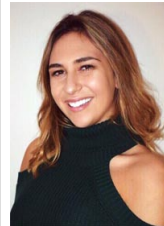
COMMENTS

Welcome to the heart of Avalon, known as the Circle Pizza Plaza, a prime investment opportunity in the best seashore community New Jersey has to offer. This unique property sits on just over half an acre of land and features five commercial and four residential spaces, all fully rented and generating steady income. It is currently home to five restaurants including some of...

PROPERTY FEATURES

Heating	Cooling	Water	Sewer
Gas Natural	Central Air Conditioning	City	City
Electric			
Forced Air			

CONTACT



Ask for Lauren Greiner
Berger Realty Inc
3160 Asbury Avenue, Ocean City
Call: 609-602-5960
Email to: lmg@bergerrealty.com

Scan to see Property page.

