

Berger Realty

Since 1928



Berger Realty, Inc.
3160 Asbury Avenue
Ocean City, NJ 08226
1-877-237-4371 / 609-399-0076
info@bergerrealty.com



600 Route 47, Cape May Court House, NJ, 08210

Price \$995,000.00

PROPERTY DETAILS

| | |
|--------------|---------------|
| Total Rooms | 24 |
| Bedrooms | 0 |
| Baths Full | 1 |
| Baths Half | 2 |
| Year Built | 1996 |
| Type | Single Family |
| Block Number | 5 |
| Listing # | 241097 |
| Taxes | 36668.00 |

COMMENTS

Amazing opportunity for the motivated entrepreneur! Appealing 2 story building, infrastructure, parking, uplands and extensive acreage (over 20 acres total with approximately 3 acres of uplands) are currently for sale. The existing building and beautiful natural trails occupy the approximately 3 acres of scenic uplands. The desirable zoning for the sprawling property is co...

PROPERTY FEATURES

| | | | |
|-------------------------------------|-------------------------------------------------|------------------------------------------------|----------------------------------|
| Exterior Stone | OutsideFeatures Deck Porch See Remarks | ParkingGarage Parking Pad Stone Driveway | InteriorFeatures Storage |
| AppliancesIncluded Range Oven | Basement Crawl Space | Heating Electric Geo-Thermal | Cooling Central Air Condition |
| HotWater Electric | Water Well | Sewer Septic | |

CONTACT



Ask for Sara Varani
Berger Realty Inc
3160 Asbury Avenue, Ocean City
Call:
Email to: sev@bergerrealty.com

Scan to see Property page.



Berger Realty

Since 1928



Berger Realty, Inc.
3160 Asbury Avenue
Ocean City, NJ 08226
1-877-237-4371 / 609-399-0076
info@bergerrealty.com



600 Route 47, Cape May Court House, NJ, 08210

Price \$995,000.00

PROPERTY DETAILS

| | |
|--------------|---------------|
| Total Rooms | 24 |
| Bedrooms | 0 |
| Baths Full | 1 |
| Baths Half | 2 |
| Year Built | 1996 |
| Type | Single Family |
| Block Number | 5 |
| Listing # | 241097 |
| Taxes | 36668.00 |

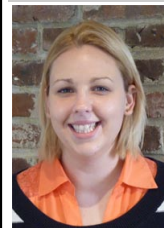
COMMENTS

Amazing opportunity for the motivated entrepreneur! Appealing 2 story building, infrastructure, parking, uplands and extensive acreage (over 20 acres total with approximately 3 acres of uplands) are currently for sale. The existing building and beautiful natural trails occupy the approximately 3 acres of scenic uplands. The desirable zoning for the sprawling property is co...

PROPERTY FEATURES

| | | | |
|-------------------------------------|-------------------------------------------------|------------------------------------------------|----------------------------------|
| Exterior Stone | OutsideFeatures Deck Porch See Remarks | ParkingGarage Parking Pad Stone Driveway | InteriorFeatures Storage |
| AppliancesIncluded Range Oven | Basement Crawl Space | Heating Electric Geo-Thermal | Cooling Central Air Condition |
| HotWater Electric | Water Well | Sewer Septic | |

CONTACT



Ask for Sara Varani
Berger Realty Inc
3160 Asbury Avenue, Ocean City
Call:
Email to: sev@bergerrealty.com

Scan to see Property page.

