

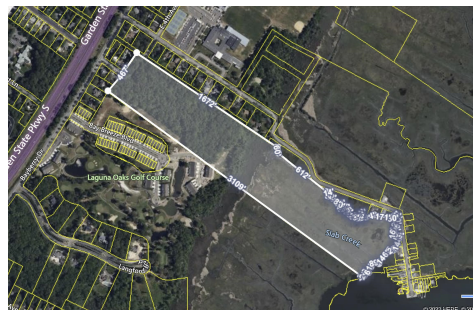


Berger Realty, Inc.  
3160 Asbury Avenue  
Ocean City, NJ 08226  
1-877-237-4371 / 609-399-0076  
info@bergerrealty.com



211 Colonial, Cape May Court House, NJ, 08210

Price \$279,900.00



#### PROPERTY DETAILS

Total Rooms	
Bedrooms	0
Baths Full	0
Baths Half	0
Year Built	
Type	Vacant Lot
Block Number	335.01
Listing #	241076
Taxes	3439.00

#### COMMENTS

*Large, vacant, wooded parcel with potential to create an Estate Quality Homestead. This property is adjacent to the Big Little Nine Golf Course and The Fairways Townhouses at Laguna Oaks. Property contains wetlands and will require DEP/CAFRA Approval. Buyer will be responsible to obtain any and all approvals for development. Possibly subdivide into more than 1 lot. Pr...*

#### PROPERTY FEATURES

#### CONTACT



Ask for Steven Spengler  
Berger Realty Inc  
3160 Asbury Avenue, Ocean City  
Call: 609-425-9253  
Email to: srs@bergerrealty.com

Scan to see Property page.



Berger Realty, Inc.  
3160 Asbury Avenue  
Ocean City, NJ 08226  
1-877-237-4371 / 609-399-0076  
info@bergerrealty.com



211 Colonial, Cape May Court House, NJ, 08210

Price \$279,900.00



#### PROPERTY DETAILS

Total Rooms	
Bedrooms	0
Baths Full	0
Baths Half	0
Year Built	
Type	Vacant Lot
Block Number	335.01
Listing #	241076
Taxes	3439.00

#### COMMENTS

*Large, vacant, wooded parcel with potential to create an Estate Quality Homestead. This property is adjacent to the Big Little Nine Golf Course and The Fairways Townhouses at Laguna Oaks. Property contains wetlands and will require DEP/CAFRA Approval. Buyer will be responsible to obtain any and all approvals for development. Possibly subdivide into more than 1 lot. Pr...*

#### PROPERTY FEATURES

#### CONTACT



Ask for Steven Spengler  
Berger Realty Inc  
3160 Asbury Avenue, Ocean City  
Call: 609-425-9253  
Email to: srs@bergerrealty.com

Scan to see Property page.

