

Berger Realty

Since 1926



Berger Realty, Inc.
3160 Asbury Avenue
Ocean City, NJ 08226
1-877-237-4371 / 609-399-0076
info@bergerrealty.com



211 Colonial, Cape May Court House, NJ, 08210

Price \$279,900.00

PROPERTY DETAILS

Total Rooms	
Bedrooms	0
Baths Full	0
Baths Half	0
Year Built	
Type	Vacant Lot
Block Number	335.01
Listing #	241076
Taxes	3439.00

COMMENTS

Large, vacant, wooded parcel with potential to create an Estate Quality Homestead. This property is adjacent to the Big Little Nine Golf Course and The Fairways Townhouses at Laguna Oaks. Property contains wetlands and will require DEP/CAFRA Approval. Buyer will be responsible to obtain any and all approvals to build a home. Possibly subdivide into more than 1 lot. Pr...

PROPERTY FEATURES

CONTACT



Ask for Lauren Greiner
Berger Realty Inc
3160 Asbury Avenue, Ocean City
Call: 609-602-5960
Email to: lmg@bergerrealty.com

Scan to see Property page.



Berger Realty

Since 1926



Berger Realty, Inc.
3160 Asbury Avenue
Ocean City, NJ 08226
1-877-237-4371 / 609-399-0076
info@bergerrealty.com



211 Colonial, Cape May Court House, NJ, 08210

Price \$279,900.00

PROPERTY DETAILS

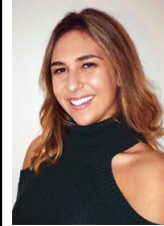
Total Rooms	
Bedrooms	0
Baths Full	0
Baths Half	0
Year Built	
Type	Vacant Lot
Block Number	335.01
Listing #	241076
Taxes	3439.00

COMMENTS

Large, vacant, wooded parcel with potential to create an Estate Quality Homestead. This property is adjacent to the Big Little Nine Golf Course and The Fairways Townhouses at Laguna Oaks. Property contains wetlands and will require DEP/CAFRA Approval. Buyer will be responsible to obtain any and all approvals to build a home. Possibly subdivide into more than 1 lot. Pr...

PROPERTY FEATURES

CONTACT



Ask for Lauren Greiner
Berger Realty Inc
3160 Asbury Avenue, Ocean City
Call: 609-602-5960
Email to: lmg@bergerrealty.com

Scan to see Property page.

