

# Berger Realty

Since 1928



Berger Realty, Inc.  
3160 Asbury Avenue  
Ocean City, NJ 08226  
1-877-237-4371 / 609-399-0076  
info@bergerrealty.com



205 Third, West Cape May, NJ, 08204

Price \$1,625,000.00

### PROPERTY DETAILS

Total Rooms	
Bedrooms	0
Baths Full	0
Baths Half	0
Year Built	
Type	Residential Vacant Lot
Block Number	40
Listing #	240993
Taxes	6265.00

### COMMENTS

Rare opportunity ready for a Buyer to design the home of their dreams! Close enough to the action but far enough for relaxing. This 100\'x160\' lot is positioned between downtown Cape May and the area farms, winery and Nature Conservancy. DEP Permit in place for a large single family and a pool, or a duplex. Located in the R-1 zone, 50\' of frontage is required per singl...

### PROPERTY FEATURES

### CONTACT



Ask for Sara Varani  
Berger Realty Inc  
3160 Asbury Avenue, Ocean City  
Call:  
Email to: sev@bergerrealty.com

Scan to see Property page.



# Berger Realty

Since 1928



Berger Realty, Inc.  
3160 Asbury Avenue  
Ocean City, NJ 08226  
1-877-237-4371 / 609-399-0076  
info@bergerrealty.com



205 Third, West Cape May, NJ, 08204

Price \$1,625,000.00

### PROPERTY DETAILS

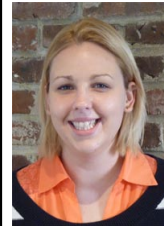
Total Rooms	
Bedrooms	0
Baths Full	0
Baths Half	0
Year Built	
Type	Residential Vacant Lot
Block Number	40
Listing #	240993
Taxes	6265.00

### COMMENTS

Rare opportunity ready for a Buyer to design the home of their dreams! Close enough to the action but far enough for relaxing. This 100\'x160\' lot is positioned between downtown Cape May and the area farms, winery and Nature Conservancy. DEP Permit in place for a large single family and a pool, or a duplex. Located in the R-1 zone, 50\' of frontage is required per singl...

### PROPERTY FEATURES

### CONTACT



Ask for Sara Varani  
Berger Realty Inc  
3160 Asbury Avenue, Ocean City  
Call:  
Email to: sev@bergerrealty.com

Scan to see Property page.

