

Berger Realty

Since 1928



Berger Realty, Inc.
55th & Haven Avenue
Ocean City, NJ 08226
609-399-0040

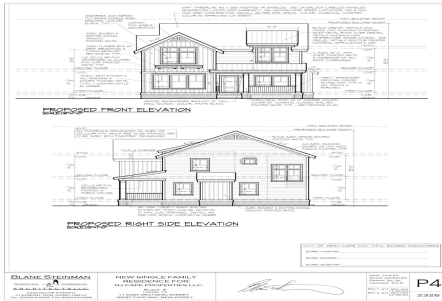
info@bergerrealty.com



11 Mechanic, West Cape May, NJ, 08204

Price \$930,000.00

PROPERTY DETAILS



Total Rooms	5
Bedrooms	2
Baths Full	1
Baths Half	0
Year Built	0
Type	Single Family
Block Number	8
Listing #	240902
Taxes	4109.00

COMMENTS

Bring your builder, let them create the home of your dreams in the historic town of West Cape May. Seller is providing all approvals and architectural drawings created by Blane Steinman. The proposed two-story home includes three bedroom and two and a half baths. First level boasts an open floor plan including the kitchen, living room and two dining areas. The second le...

PROPERTY FEATURES

Heating	Cooling	HotWater	Water
Electric	Other Air Conditioning	Electric	City
Sewer			
City			

CONTACT



Ask for Kathy Errickson
Berger Realty Inc
109 E 55th St., Ocean City
Call: 609-381-9232
Email to: kae@bergerrealty.com

Scan to see Property page.



Berger Realty

Since 1928



Berger Realty, Inc.
55th & Haven Avenue
Ocean City, NJ 08226
609-399-0040

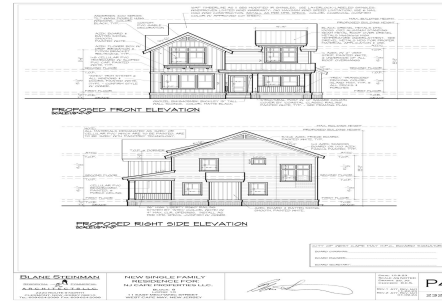
info@bergerrealty.com



11 Mechanic, West Cape May, NJ, 08204

Price \$930,000.00

PROPERTY DETAILS



Total Rooms	5
Bedrooms	2
Baths Full	1
Baths Half	0
Year Built	0
Type	Single Family
Block Number	8
Listing #	240902
Taxes	4109.00

COMMENTS

Bring your builder, let them create the home of your dreams in the historic town of West Cape May. Seller is providing all approvals and architectural drawings created by Blane Steinman. The proposed two-story home includes three bedroom and two and a half baths. First level boasts an open floor plan including the kitchen, living room and two dining areas. The second le...

PROPERTY FEATURES

Heating	Cooling	HotWater	Water
Electric	Other Air Conditioning	Electric	City
Sewer			
City			

CONTACT



Ask for Kathy Errickson
Berger Realty Inc
109 E 55th St., Ocean City
Call: 609-381-9232
Email to: kae@bergerrealty.com

Scan to see Property page.

