

Berger Realty

Since 1928



Berger Realty, Inc.
3160 Asbury Avenue
Ocean City, NJ 08226
1-877-237-4371 / 609-399-0076
info@bergerrealty.com



11108 2nd, Stone Harbor, NJ, 08247

Price \$4,495,000.00

PROPERTY DETAILS

Total Rooms	
Bedrooms	0
Baths Full	0
Baths Half	0
Year Built	
Type	Residential Vacant Lot
Block Number	111.02
Listing #	240901
Taxes	



COMMENTS

Welcome to the Stone Harbor Real Estate market! We are thrilled to introduce you to one of the most exciting offerings available right now. Get ready to be amazed by this newly formed 13 lot beach block subdivision, nestled in the peaceful south end of Stone Harbor. These lots are truly exceptional, as they boast the highest elevation in all of Stone Harbor. Imagine waking...

PROPERTY FEATURES

CONTACT



Ask for Dori Adams
Berger Realty Inc
3160 Asbury Avenue, Ocean City
Call: 609-602-2545
Email to: doa@bergerrealty.com

Scan to see Property page.



Berger Realty

Since 1928



Berger Realty, Inc.
3160 Asbury Avenue
Ocean City, NJ 08226
1-877-237-4371 / 609-399-0076
info@bergerrealty.com



11108 2nd, Stone Harbor, NJ, 08247

Price \$4,495,000.00

PROPERTY DETAILS

Total Rooms	
Bedrooms	0
Baths Full	0
Baths Half	0
Year Built	
Type	Residential Vacant Lot
Block Number	111.02
Listing #	240901
Taxes	

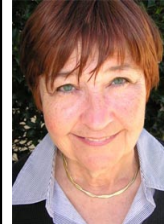


COMMENTS

Welcome to the Stone Harbor Real Estate market! We are thrilled to introduce you to one of the most exciting offerings available right now. Get ready to be amazed by this newly formed 13 lot beach block subdivision, nestled in the peaceful south end of Stone Harbor. These lots are truly exceptional, as they boast the highest elevation in all of Stone Harbor. Imagine waking...

PROPERTY FEATURES

CONTACT



Ask for Dori Adams
Berger Realty Inc
3160 Asbury Avenue, Ocean City
Call: 609-602-2545
Email to: doa@bergerrealty.com

Scan to see Property page.

