

# Berger Realty

Since 1926



Berger Realty, Inc.  
3160 Asbury Avenue  
Ocean City, NJ 08226  
1-877-237-4371 / 609-399-0076  
info@bergerrealty.com



137 111th, Stone Harbor, NJ, 08247

Price \$4,495,000.00

### PROPERTY DETAILS

|              |                        |
|--------------|------------------------|
| Total Rooms  |                        |
| Bedrooms     | 0                      |
| Baths Full   | 0                      |
| Baths Half   | 0                      |
| Year Built   |                        |
| Type         | Residential Vacant Lot |
| Block Number | 111.02                 |
| Listing #    | 240869                 |
| Taxes        |                        |



### COMMENTS

Welcome to the Stone Harbor Real Estate market! We are thrilled to introduce you to one of the most exciting offerings available right now. Get ready to be amazed by this newly formed 13 lot beach block subdivision, nestled in the peaceful south end of Stone Harbor. These lots are truly exceptional, as they boast the highest elevation in all of Stone Harbor. Imagine waki...

### PROPERTY FEATURES

### CONTACT



Ask for Marki Lyn Warlow  
Berger Realty Inc  
3160 Asbury Avenue, Ocean City  
Call:  
Email to: mlw@bergerrealty.com

Scan to see Property page.



# Berger Realty

Since 1926



Berger Realty, Inc.  
3160 Asbury Avenue  
Ocean City, NJ 08226  
1-877-237-4371 / 609-399-0076  
info@bergerrealty.com



137 111th, Stone Harbor, NJ, 08247

Price \$4,495,000.00

### PROPERTY DETAILS

|              |                        |
|--------------|------------------------|
| Total Rooms  |                        |
| Bedrooms     | 0                      |
| Baths Full   | 0                      |
| Baths Half   | 0                      |
| Year Built   |                        |
| Type         | Residential Vacant Lot |
| Block Number | 111.02                 |
| Listing #    | 240869                 |
| Taxes        |                        |

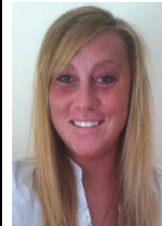


### COMMENTS

Welcome to the Stone Harbor Real Estate market! We are thrilled to introduce you to one of the most exciting offerings available right now. Get ready to be amazed by this newly formed 13 lot beach block subdivision, nestled in the peaceful south end of Stone Harbor. These lots are truly exceptional, as they boast the highest elevation in all of Stone Harbor. Imagine waki...

### PROPERTY FEATURES

### CONTACT



Ask for Marki Lyn Warlow  
Berger Realty Inc  
3160 Asbury Avenue, Ocean City  
Call:  
Email to: mlw@bergerrealty.com

Scan to see Property page.

