

Berger Realty

Since 1926



Berger Realty, Inc
1330 Bay Avenue
Ocean City, NJ 08226
609-391-1330/609-391-1300
info@bergerrealty.com



Berger Realty

Since 1926

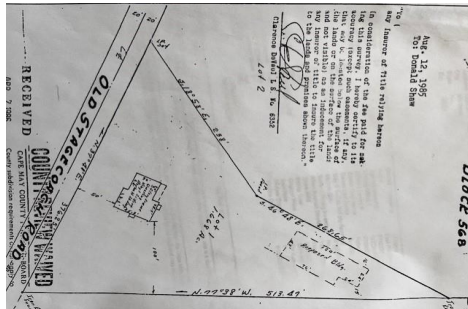


Berger Realty, Inc
1330 Bay Avenue
Ocean City, NJ 08226
609-391-1330/609-391-1300
info@bergerrealty.com



1299 Stagecoach, Palermo, NJ, 08223

Price \$299,000.00



PROPERTY DETAILS

Total Rooms	0
Bedrooms	0
Baths Full	0
Baths Half	0
Year Built	
Type	Residential Vacant Lot
Block Number	568
Listing #	240865
Taxes	1610.00

COMMENTS

Commercial lot in a great location in Upper Township. Property has a foundation which might be useable. Second old foundation on the property that had never been used....

PROPERTY FEATURES

CONTACT



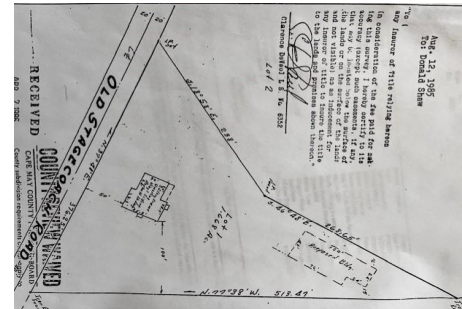
Ask for Michael Wallitsch
Berger Realty Inc
1330 Bay Avenue, Ocean City
Call: 609-350-9800
Email to: mow@bergerrealty.com

Scan to see Property page.



1299 Stagecoach, Palermo, NJ, 08223

Price \$299,000.00



PROPERTY DETAILS

Total Rooms	0
Bedrooms	0
Baths Full	0
Baths Half	0
Year Built	
Type	Residential Vacant Lot
Block Number	568
Listing #	240865
Taxes	1610.00

COMMENTS

Commercial lot in a great location in Upper Township. Property has a foundation which might be useable. Second old foundation on the property that had never been used....

PROPERTY FEATURES

CONTACT



Ask for Michael Wallitsch
Berger Realty Inc
1330 Bay Avenue, Ocean City
Call: 609-350-9800
Email to: mow@bergerrealty.com

Scan to see Property page.

