

# Berger Realty

Since 1926

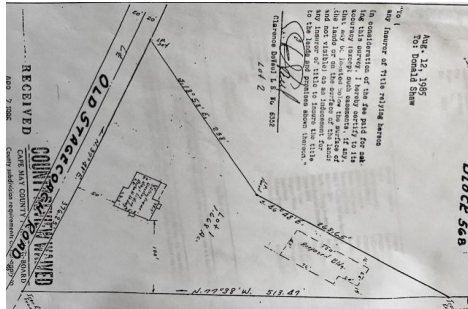


Berger Realty, Inc.  
3160 Asbury Avenue  
Ocean City, NJ 08226  
1-877-237-4371 / 609-399-0076  
info@bergerrealty.com



1299 Stagecoach, Palermo, NJ, 08223

Price \$299,000.00



### PROPERTY DETAILS

<b>Total Rooms</b>	
<b>Bedrooms</b>	0
<b>Baths Full</b>	0
<b>Baths Half</b>	0
<b>Year Built</b>	
<b>Type</b>	Residential Vacant Lot
<b>Block Number</b>	568
<b>Listing #</b>	240865
<b>Taxes</b>	1610.00

### COMMENTS

Commercial lot in a great location in Upper Township. Property has a foundation which might be useable. Second old foundation on the property that had never been used....

### PROPERTY FEATURES

### CONTACT



Ask for John Van Stone  
Berger Realty Inc  
3160 Asbury Avenue, Ocean City  
Call:  
Email to: jvs@bergerrealty.com

Scan to see Property page.



# Berger Realty

Since 1926

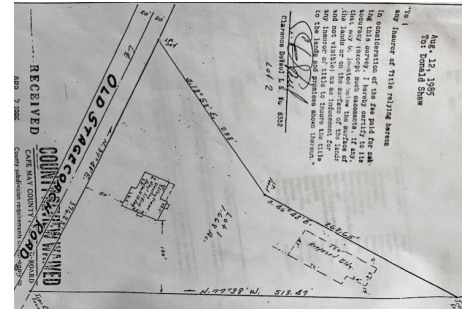


Berger Realty, Inc.  
3160 Asbury Avenue  
Ocean City, NJ 08226  
1-877-237-4371 / 609-399-0076  
info@bergerrealty.com



1299 Stagecoach, Palermo, NJ, 08223

Price \$299,000.00



### PROPERTY DETAILS

<b>Total Rooms</b>	
<b>Bedrooms</b>	0
<b>Baths Full</b>	0
<b>Baths Half</b>	0
<b>Year Built</b>	
<b>Type</b>	Residential Vacant Lot
<b>Block Number</b>	568
<b>Listing #</b>	240865
<b>Taxes</b>	1610.00

### COMMENTS

Commercial lot in a great location in Upper Township. Property has a foundation which might be useable. Second old foundation on the property that had never been used....

### PROPERTY FEATURES

### CONTACT



Ask for John Van Stone  
Berger Realty Inc  
3160 Asbury Avenue, Ocean City  
Call:  
Email to: jvs@bergerrealty.com

Scan to see Property page.

