

Berger Realty

Since 1926



Berger Realty, Inc.
3160 Asbury Avenue
Ocean City, NJ 08226
1-877-237-4371 / 609-399-0076
info@bergerrealty.com



1304 Route 47, Rio Grande, NJ, 08242

Price \$5,999,900.00

PROPERTY DETAILS

Total Rooms	0
Bedrooms	
Baths Full	
Baths Half	
Year Built	
Type	Commercial/Industrial
Block Number	1485
Listing #	240726
Taxes	84686.00

COMMENTS

Welcome to "The Village Shoppes!" a rare opportunity to own a prime piece of commercial real estate in the up and coming area of Rio Grande. This expansive property spans 5 acres and features a total lot size of 18,526 square feet, offering a wide variety of commercial units spread throughout 3 buildings. With over 30+ commercial units this property presents a multitud...

PROPERTY FEATURES

Heating	Cooling	Water	Sewer
Gas Natural	Central Air Conditioning	Public	Public

CONTACT



Ask for Lauren Greiner
Berger Realty Inc
3160 Asbury Avenue, Ocean City
Call: 609-602-5960
Email to: lmg@bergerrealty.com

Scan to see Property page.



Berger Realty

Since 1926



Berger Realty, Inc.
3160 Asbury Avenue
Ocean City, NJ 08226
1-877-237-4371 / 609-399-0076
info@bergerrealty.com



1304 Route 47, Rio Grande, NJ, 08242

Price \$5,999,900.00

PROPERTY DETAILS

Total Rooms	0
Bedrooms	
Baths Full	
Baths Half	
Year Built	
Type	Commercial/Industrial
Block Number	1485
Listing #	240726
Taxes	84686.00

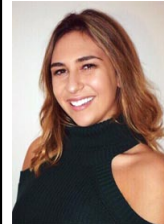
COMMENTS

Welcome to "The Village Shoppes!" a rare opportunity to own a prime piece of commercial real estate in the up and coming area of Rio Grande. This expansive property spans 5 acres and features a total lot size of 18,526 square feet, offering a wide variety of commercial units spread throughout 3 buildings. With over 30+ commercial units this property presents a multitud...

PROPERTY FEATURES

Heating	Cooling	Water	Sewer
Gas Natural	Central Air Conditioning	Public	Public

CONTACT



Ask for Lauren Greiner
Berger Realty Inc
3160 Asbury Avenue, Ocean City
Call: 609-602-5960
Email to: lmg@bergerrealty.com

Scan to see Property page.

