

Berger Realty

Since 1926



Berger Realty, Inc.
3160 Asbury Avenue
Ocean City, NJ 08226
1-877-237-4371 / 609-399-0076
info@bergerrealty.com



3510 Hudson, Wildwood, NJ, 08260

Price \$299,900.00



PROPERTY DETAILS

| | |
|--------------|------------------------|
| Total Rooms | |
| Bedrooms | 0 |
| Baths Full | 0 |
| Baths Half | 0 |
| Year Built | |
| Type | Residential Vacant Lot |
| Block Number | 168 |
| Listing # | 240237 |
| Taxes | 2851.00 |

COMMENTS

BE A PART OF THE NEW CONSTRUCTION WAVE OF WILDWOOD'S BACK BAY! Corner lot, approx. 40x97, partially cleared, in an area full of new development. This property comes with stamped plans from an architect for a 5 Bed 3.5 Bath home. Elevations, floorplans, and survey are located in associated docs. Contact agent for more information....

PROPERTY FEATURES

CONTACT



Ask for Sara Varani
Berger Realty Inc
3160 Asbury Avenue, Ocean City
Call:
Email to: sev@bergerrealty.com

Scan to see Property page.



Berger Realty

Since 1926



Berger Realty, Inc.
3160 Asbury Avenue
Ocean City, NJ 08226
1-877-237-4371 / 609-399-0076
info@bergerrealty.com



3510 Hudson, Wildwood, NJ, 08260

Price \$299,900.00



PROPERTY DETAILS

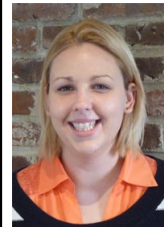
| | |
|--------------|------------------------|
| Total Rooms | |
| Bedrooms | 0 |
| Baths Full | 0 |
| Baths Half | 0 |
| Year Built | |
| Type | Residential Vacant Lot |
| Block Number | 168 |
| Listing # | 240237 |
| Taxes | 2851.00 |

COMMENTS

BE A PART OF THE NEW CONSTRUCTION WAVE OF WILDWOOD'S BACK BAY! Corner lot, approx. 40x97, partially cleared, in an area full of new development. This property comes with stamped plans from an architect for a 5 Bed 3.5 Bath home. Elevations, floorplans, and survey are located in associated docs. Contact agent for more information....

PROPERTY FEATURES

CONTACT



Ask for Sara Varani
Berger Realty Inc
3160 Asbury Avenue, Ocean City
Call:
Email to: sev@bergerrealty.com

Scan to see Property page.

