

Berger Realty

Since 1926



Berger Realty, Inc.
3160 Asbury Avenue
Ocean City, NJ 08226
1-877-237-4371 / 609-399-0076
info@bergerrealty.com



804 Route 9 South, Cape May Court House, NJ, 08210

Price \$1,175,000.00

PROPERTY DETAILS

| | |
|--------------|---------------------|
| Total Rooms | 0 |
| Bedrooms | |
| Baths Full | |
| Baths Half | |
| Year Built | 2001 |
| Type | Office/Professional |
| Block Number | 333 |
| Listing # | 240033 |
| Taxes | 22372.00 |

COMMENTS

Looking for a prime location for your business or an investment? This property is located in a commercial area of Cape May Court House with high exposure on Route 9. It is suitable for a variety of commercial uses and there are four units with rental income (one unit to be vacated soon). The building is over 7,000 square feet with more than adequate parking spaces. The bui...

PROPERTY FEATURES

| | | | |
|--------------------------|-------------------|--------------------|-------------|
| OutsideFeatures | ParkingGarage | OtherRooms | Heating |
| Security Light/System | 11 Or More Spaces | Office Space Avail | Gas Natural |
| Cooling | HotWater | Water | Sewer |
| Central Air Conditioning | Gas | City | City |

CONTACT



Ask for Margarita Kobilianets
Berger Realty Inc
3160 Asbury Avenue, Ocean City
Call: 609-674-3417
Email to: mak@bergerrealty.com

Scan to see Property page.



Berger Realty

Since 1926



Berger Realty, Inc.
3160 Asbury Avenue
Ocean City, NJ 08226
1-877-237-4371 / 609-399-0076
info@bergerrealty.com



804 Route 9 South, Cape May Court House, NJ, 08210

Price \$1,175,000.00

PROPERTY DETAILS

| | |
|--------------|---------------------|
| Total Rooms | 0 |
| Bedrooms | |
| Baths Full | |
| Baths Half | |
| Year Built | 2001 |
| Type | Office/Professional |
| Block Number | 333 |
| Listing # | 240033 |
| Taxes | 22372.00 |

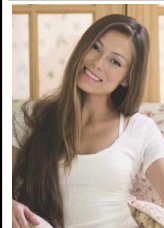
COMMENTS

Looking for a prime location for your business or an investment? This property is located in a commercial area of Cape May Court House with high exposure on Route 9. It is suitable for a variety of commercial uses and there are four units with rental income (one unit to be vacated soon). The building is over 7,000 square feet with more than adequate parking spaces. The bui...

PROPERTY FEATURES

| | | | |
|--------------------------|-------------------|--------------------|-------------|
| OutsideFeatures | ParkingGarage | OtherRooms | Heating |
| Security Light/System | 11 Or More Spaces | Office Space Avail | Gas Natural |
| Cooling | HotWater | Water | Sewer |
| Central Air Conditioning | Gas | City | City |

CONTACT



Ask for Margarita Kobilianets
Berger Realty Inc
3160 Asbury Avenue, Ocean City
Call: 609-674-3417
Email to: mak@bergerrealty.com

Scan to see Property page.

