

Berger Realty

Since 1926



Berger Realty, Inc
1330 Bay Avenue
Ocean City, NJ 08226
609-391-1330/609-391-1300
info@bergerrealty.com



804 Route 9 South, Cape May Court House, NJ, 08210

Price \$1,175,000.00

PROPERTY DETAILS

| | |
|--------------|---------------------|
| Total Rooms | |
| Bedrooms | 0 |
| Baths Full | |
| Baths Half | |
| Year Built | 2001 |
| Type | Office/Professional |
| Block Number | 333 |
| Listing # | 240033 |
| Taxes | 22372.00 |

COMMENTS

Looking for a prime location for your business or an investment? This property is located in a commercial area of Cape May Court House with high exposure on Route 9. It is suitable for a variety of commercial uses and there are four units with rental income (one unit to be vacated soon). The building is over 7,000 square feet with more than adequate parking spaces. The building is over 7,000 square feet with more than adequate parking spaces. The building is over 7,000 square feet with more than adequate parking spaces.

PROPERTY FEATURES

| | | | |
|--------------------------|-------------------|--------------------|-------------|
| OutsideFeatures | ParkingGarage | OtherRooms | Heating |
| Security Light/System | 11 Or More Spaces | Office Space Avail | Gas Natural |
| Cooling | HotWater | Water | Sewer |
| Central Air Conditioning | Gas | City | City |

CONTACT



Ask for Joanne Kelly
Berger Realty Inc
1330 Bay Avenue, Ocean City
Call: 609-425-2106
Email to: jmk@bergerrealty.com

Scan to see Property page.



Berger Realty

Since 1926



Berger Realty, Inc
1330 Bay Avenue
Ocean City, NJ 08226
609-391-1330/609-391-1300
info@bergerrealty.com



804 Route 9 South, Cape May Court House, NJ, 08210

Price \$1,175,000.00

PROPERTY DETAILS

| | |
|--------------|---------------------|
| Total Rooms | |
| Bedrooms | 0 |
| Baths Full | |
| Baths Half | |
| Year Built | 2001 |
| Type | Office/Professional |
| Block Number | 333 |
| Listing # | 240033 |
| Taxes | 22372.00 |

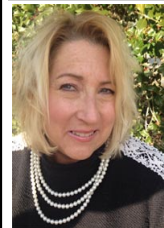
COMMENTS

Looking for a prime location for your business or an investment? This property is located in a commercial area of Cape May Court House with high exposure on Route 9. It is suitable for a variety of commercial uses and there are four units with rental income (one unit to be vacated soon). The building is over 7,000 square feet with more than adequate parking spaces. The building is over 7,000 square feet with more than adequate parking spaces. The building is over 7,000 square feet with more than adequate parking spaces.

PROPERTY FEATURES

| | | | |
|--------------------------|-------------------|--------------------|-------------|
| OutsideFeatures | ParkingGarage | OtherRooms | Heating |
| Security Light/System | 11 Or More Spaces | Office Space Avail | Gas Natural |
| Cooling | HotWater | Water | Sewer |
| Central Air Conditioning | Gas | City | City |

CONTACT



Ask for Joanne Kelly
Berger Realty Inc
1330 Bay Avenue, Ocean City
Call: 609-425-2106
Email to: jmk@bergerrealty.com

Scan to see Property page.

