

Berger Realty

Since 1926

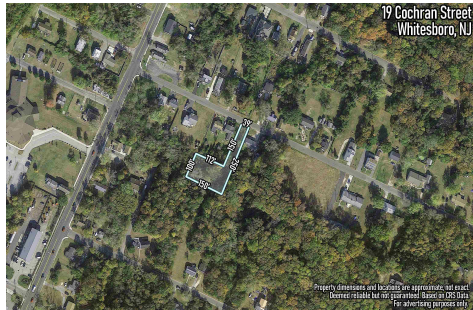


Berger Realty, Inc.
3160 Asbury Avenue
Ocean City, NJ 08226
1-877-237-4371 / 609-399-0076
info@bergerrealty.com



19 Cochran, Whitesboro, NJ, 08210

Price \$40,000.00



19 Cochran Street
Whitesboro, NJ

PROPERTY DETAILS

Total Rooms	
Bedrooms	0
Baths Full	0
Baths Half	0
Year Built	
Type	Vacant Lot
Block Number	1058
Listing #	233203
Taxes	349.00

COMMENTS

Flag lot with 100x150 rear 38' easement zoned Town Business Possible wetlands on the southeast corner, because of proximity to wetlands a letter of interpretation is needed from DEP for setbacks. All information is public information buyer should do their due diligence and confirm accuracy. From the township sewer is in the flagpole portion of the easement for the lot al...

PROPERTY FEATURES

CONTACT



Ask for Michael Devlin
Berger Realty Inc
3160 Asbury Avenue, Ocean City
Call: 609-306-3730
Email to: msd@bergerrealty.com

Scan to see Property page.



Berger Realty

Since 1926

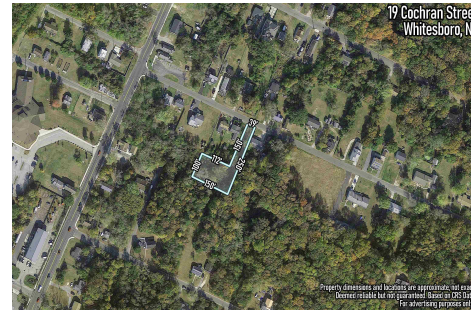


Berger Realty, Inc.
3160 Asbury Avenue
Ocean City, NJ 08226
1-877-237-4371 / 609-399-0076
info@bergerrealty.com



19 Cochran, Whitesboro, NJ, 08210

Price \$40,000.00



19 Cochran Street
Whitesboro, NJ

PROPERTY DETAILS

Total Rooms	
Bedrooms	0
Baths Full	0
Baths Half	0
Year Built	
Type	Vacant Lot
Block Number	1058
Listing #	233203
Taxes	349.00

COMMENTS

Flag lot with 100x150 rear 38' easement zoned Town Business Possible wetlands on the southeast corner, because of proximity to wetlands a letter of interpretation is needed from DEP for setbacks. All information is public information buyer should do their due diligence and confirm accuracy. From the township sewer is in the flagpole portion of the easement for the lot al...

PROPERTY FEATURES

CONTACT



Ask for Michael Devlin
Berger Realty Inc
3160 Asbury Avenue, Ocean City
Call: 609-306-3730
Email to: msd@bergerrealty.com

Scan to see Property page.

