

# Berger Realty

Since 1926



Ocean 17  
1670 Boardwalk  
Ocean City, NJ 08226  
609-391-0500

oc17@BergerRealty.com



0 South Egg Harbor, Winslow Township, NJ, 08037

Price \$200,000.00



### PROPERTY DETAILS

Total Rooms	
Bedrooms	0
Baths Full	0
Baths Half	0
Year Built	
Type	Residential Vacant Lot
Block Number	7303
Listing #	233089
Taxes	3251.00

### COMMENTS

14 + Acres located in Winslow Twp, Hammonton area in PR1 zoning in a Pinelands Rural Development Area. Rural Residential Zoning permitted uses allow single family on 3.2 acres lots (possible 4 lots) or 1 Acre cluster development , agriculture, forestry, roadside retail and service,. Sale is as is where is seller makes no representation to the feasibility of subdividing th...

### PROPERTY FEATURES

### CONTACT



Ask for Troy Eggie  
Berger Realty Inc  
1670 Boardwalk, Ocean City  
Call: 609-425-0992  
Email to: tde@bergerrealty.com

Scan to see Property page.



# Berger Realty

Since 1926



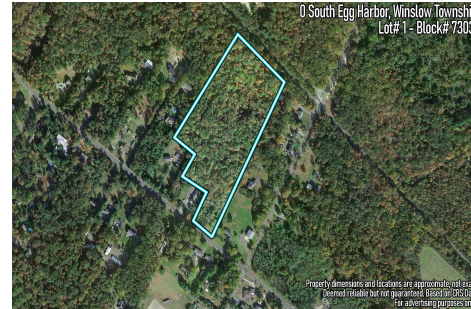
Ocean 17  
1670 Boardwalk  
Ocean City, NJ 08226  
609-391-0500

oc17@BergerRealty.com



0 South Egg Harbor, Winslow Township, NJ, 08037

Price \$200,000.00



### PROPERTY DETAILS

Total Rooms	
Bedrooms	0
Baths Full	0
Baths Half	0
Year Built	
Type	Residential Vacant Lot
Block Number	7303
Listing #	233089
Taxes	3251.00

### COMMENTS

14 + Acres located in Winslow Twp, Hammonton area in PR1 zoning in a Pinelands Rural Development Area. Rural Residential Zoning permitted uses allow single family on 3.2 acres lots (possible 4 lots) or 1 Acre cluster development , agriculture, forestry, roadside retail and service,. Sale is as is where is seller makes no representation to the feasibility of subdividing th...

### PROPERTY FEATURES

### CONTACT



Ask for Troy Eggie  
Berger Realty Inc  
1670 Boardwalk, Ocean City  
Call: 609-425-0992  
Email to: tde@bergerrealty.com

Scan to see Property page.

