

Berger Realty

Since 1926



Ocean 17
1670 Boardwalk
Ocean City, NJ 08226
609-391-0500

oc17@BergerRealty.com



0 South Egg Harbor, Winslow Township, NJ, 08037

Price \$200,000.00



PROPERTY DETAILS

Total Rooms	
Bedrooms	0
Baths Full	0
Baths Half	0
Year Built	
Type	Residential Vacant Lot
Block Number	7303
Listing #	233089
Taxes	3251.00

COMMENTS

14 + Acres located in Winslow Twp, Hammonton area in PR1 zoning in a Pinelands Rural Development Area. Rural Residential Zoning permitted uses allow single family on 3.2 acres lots (possible 4 lots) or 1 Acre cluster development , agriculture, forestry, roadside retail and service,. Sale is as is where is seller makes no representation to the feasibility of subdividing th...

PROPERTY FEATURES

CONTACT



Ask for Linda Watts
Berger Realty Inc
1670 Boardwalk, Ocean City
Call: 609-230-6595
Email to: ljw@bergerrealty.com

Scan to see Property page.



Berger Realty

Since 1926



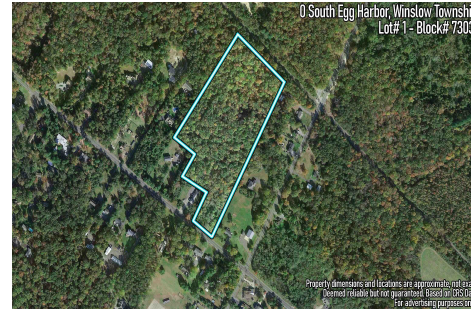
Ocean 17
1670 Boardwalk
Ocean City, NJ 08226
609-391-0500

oc17@BergerRealty.com



0 South Egg Harbor, Winslow Township, NJ, 08037

Price \$200,000.00



PROPERTY DETAILS

Total Rooms	
Bedrooms	0
Baths Full	0
Baths Half	0
Year Built	
Type	Residential Vacant Lot
Block Number	7303
Listing #	233089
Taxes	3251.00

COMMENTS

14 + Acres located in Winslow Twp, Hammonton area in PR1 zoning in a Pinelands Rural Development Area. Rural Residential Zoning permitted uses allow single family on 3.2 acres lots (possible 4 lots) or 1 Acre cluster development , agriculture, forestry, roadside retail and service,. Sale is as is where is seller makes no representation to the feasibility of subdividing th...

PROPERTY FEATURES

CONTACT



Ask for Linda Watts
Berger Realty Inc
1670 Boardwalk, Ocean City
Call: 609-230-6595
Email to: ljw@bergerrealty.com

Scan to see Property page.

