

Berger Realty

Since 1926

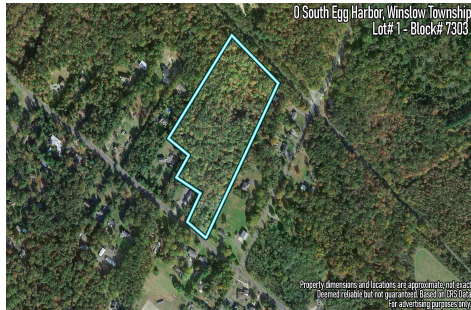


Berger Realty, Inc.
3160 Asbury Avenue
Ocean City, NJ 08226
1-877-237-4371 / 609-399-0076
info@bergerrealty.com



0 South Egg Harbor, Winslow Township, NJ, 08037

Price \$200,000.00



PROPERTY DETAILS

Total Rooms	
Bedrooms	0
Baths Full	0
Baths Half	0
Year Built	
Type	Residential Vacant Lot
Block Number	7303
Listing #	233089
Taxes	3251.00

COMMENTS

14 + Acres located in Winslow Twp, Hammonton area in PR1 zoning in a Pinelands Rural Development Area. Rural Residential Zoning permitted uses allow single family on 3.2 acres lots (possible 4 lots) or 1 Acre cluster development , agriculture, forestry, roadside retail and service,. Sale is as is where is seller makes no representation to the feasibility of subdividing th...

PROPERTY FEATURES

CONTACT



Ask for Graham Ginn
Berger Realty Inc
3160 Asbury Avenue, Ocean City
Call: 609-602-4884
Email to: gmg@bergerrealty.com
https://www.ocnj.com

Scan to see Property page.



Berger Realty

Since 1926

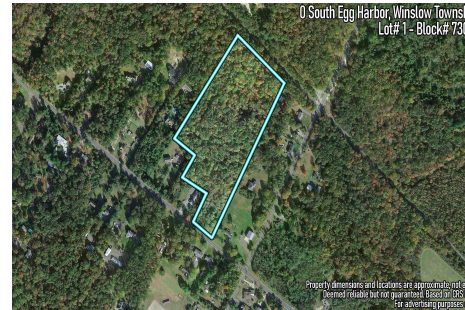


Berger Realty, Inc.
3160 Asbury Avenue
Ocean City, NJ 08226
1-877-237-4371 / 609-399-0076
info@bergerrealty.com



0 South Egg Harbor, Winslow Township, NJ, 08037

Price \$200,000.00



PROPERTY DETAILS

Total Rooms	
Bedrooms	0
Baths Full	0
Baths Half	0
Year Built	
Type	Residential Vacant Lot
Block Number	7303
Listing #	233089
Taxes	3251.00

COMMENTS

14 + Acres located in Winslow Twp, Hammonton area in PR1 zoning in a Pinelands Rural Development Area. Rural Residential Zoning permitted uses allow single family on 3.2 acres lots (possible 4 lots) or 1 Acre cluster development , agriculture, forestry, roadside retail and service,. Sale is as is where is seller makes no representation to the feasibility of subdividing th...

PROPERTY FEATURES

CONTACT



Ask for Graham Ginn
Berger Realty Inc
3160 Asbury Avenue, Ocean City
Call: 609-602-4884
Email to: gmg@bergerrealty.com
https://www.ocnj.com

Scan to see Property page.

