



Berger Realty, Inc.  
3160 Asbury Avenue  
Ocean City, NJ 08226  
1-877-237-4371 / 609-399-0076  
info@bergerrealty.com



491 Route 9, 275 Holly Circle, Lower Township, NJ, 08204

Price \$84,500.00

#### PROPERTY DETAILS

Total Rooms	6
Bedrooms	1
Baths Full	1
Baths Half	0
Year Built	
Type	Park Model Campground
Block Number	0
Listing #	231847
Taxes	

#### COMMENTS

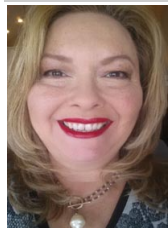
*This is the perfect opportunity to snatch an affordable family shore vacation spot, this mobile is in the highly sought after sun outdoors, nestled between Cape May and Wildwood. This 2007 park model has one full bedroom as well as a double loft, making it big enough for the whole family it also features a Florida room, deck and patio area outside. This park is open 4/15...*

#### PROPERTY FEATURES

AppliancesIncluded	AlsoIncluded	Heating	Cooling
Range	Furniture	Gas Propane	Central Air
Oven			
Refrigerator			

HotWater	Water	Sewer
Gas	Private	Private

#### CONTACT



Ask for Theresa Maina  
Berger Realty Inc  
3160 Asbury Avenue, Ocean City  
Call: 609-703-7725  
Email to: tam@bergerrealty.com

Scan to see Property page.



Berger Realty, Inc.  
3160 Asbury Avenue  
Ocean City, NJ 08226  
1-877-237-4371 / 609-399-0076  
info@bergerrealty.com



491 Route 9, 275 Holly Circle, Lower Township, NJ, 08204

Price \$84,500.00

#### PROPERTY DETAILS

Total Rooms	6
Bedrooms	1
Baths Full	1
Baths Half	0
Year Built	
Type	Park Model Campground
Block Number	0
Listing #	231847
Taxes	

#### COMMENTS

*This is the perfect opportunity to snatch an affordable family shore vacation spot, this mobile is in the highly sought after sun outdoors, nestled between Cape May and Wildwood. This 2007 park model has one full bedroom as well as a double loft, making it big enough for the whole family it also features a Florida room, deck and patio area outside. This park is open 4/15...*

#### PROPERTY FEATURES

AppliancesIncluded	AlsoIncluded	Heating	Cooling
Range	Furniture	Gas Propane	Central Air
Oven			
Refrigerator			

HotWater	Water	Sewer
Gas	Private	Private

#### CONTACT



Ask for Theresa Maina  
Berger Realty Inc  
3160 Asbury Avenue, Ocean City  
Call: 609-703-7725  
Email to: tam@bergerrealty.com

Scan to see Property page.

