

Berger Realty

Since 1926



Berger Realty, Inc.
3160 Asbury Avenue
Ocean City, NJ 08226
1-877-237-4371 / 609-399-0076
info@bergerrealty.com



6 King, Cape May Court House, NJ, 08210

Price \$60,000.00

PROPERTY DETAILS

Total Rooms	
Bedrooms	0
Baths Full	0
Baths Half	0
Year Built	
Type	Residential Vacant Lot
Block Number	61
Listing #	231163
Taxes	1359.00



COMMENTS

Great Location! Close to downtown on a quiet dead end street. This is a combination of 2 lots known as 4 and 6 King Avenue. The two lots equal 150 foot frontage....

PROPERTY FEATURES

CONTACT



Ask for Joyce McMahon
Berger Realty Inc
3160 Asbury Avenue, Ocean City
Call:
Email to: jmm@bergerrealty.com

Scan to see Property page.



Berger Realty

Since 1926



Berger Realty, Inc.
3160 Asbury Avenue
Ocean City, NJ 08226
1-877-237-4371 / 609-399-0076
info@bergerrealty.com



6 King, Cape May Court House, NJ, 08210

Price \$60,000.00

PROPERTY DETAILS

Total Rooms	
Bedrooms	0
Baths Full	0
Baths Half	0
Year Built	
Type	Residential Vacant Lot
Block Number	61
Listing #	231163
Taxes	1359.00

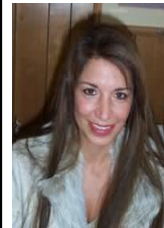


COMMENTS

Great Location! Close to downtown on a quiet dead end street. This is a combination of 2 lots known as 4 and 6 King Avenue. The two lots equal 150 foot frontage....

PROPERTY FEATURES

CONTACT



Ask for Joyce McMahon
Berger Realty Inc
3160 Asbury Avenue, Ocean City
Call:
Email to: jmm@bergerrealty.com

Scan to see Property page.

