

Berger Realty

Since 1926

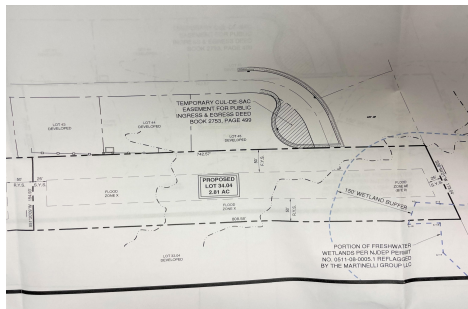


Berger Realty, Inc.
3160 Asbury Avenue
Ocean City, NJ 08226
1-877-237-4371 / 609-399-0076
info@bergerrealty.com



24 Timber, Palermo, NJ, 08230

Price \$249,900.00



PROPERTY DETAILS

Total Rooms	
Bedrooms	0
Baths Full	0
Baths Half	0
Year Built	
Type	Residential Vacant Lot
Block Number	597
Listing #	230422
Taxes	

COMMENTS

Secluded Buildable wooded lot on a cul de sac off by itself but close to everything. 2.81 Acres part of a 4 lot sub division that will be finalized in April 2023. Buyer is responsible for all permits, perk tests and engineer to be able to construct a single family home....

PROPERTY FEATURES

CONTACT

Berger Realty Inc
3160 Asbury Ave.
Ocean City, NJ 08226
Call: (609) 399-0076
Email to: info@bergerrealty.com
Web: www.bergerrealty.com

Scan to see Property page.



Berger Realty

Since 1926

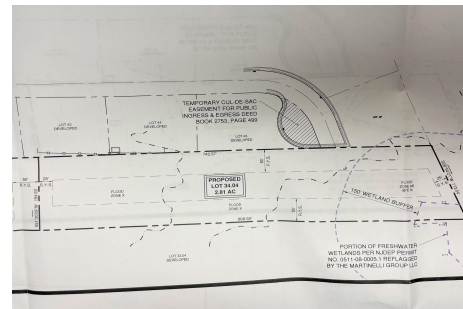


Berger Realty, Inc.
3160 Asbury Avenue
Ocean City, NJ 08226
1-877-237-4371 / 609-399-0076
info@bergerrealty.com



24 Timber, Palermo, NJ, 08230

Price \$249,900.00



PROPERTY DETAILS

Total Rooms	
Bedrooms	0
Baths Full	0
Baths Half	0
Year Built	
Type	Residential Vacant Lot
Block Number	597
Listing #	230422
Taxes	

COMMENTS

Secluded Buildable wooded lot on a cul de sac off by itself but close to everything. 2.81 Acres part of a 4 lot sub division that will be finalized in April 2023. Buyer is responsible for all permits, perk tests and engineer to be able to construct a single family home....

PROPERTY FEATURES

CONTACT

Berger Realty Inc
3160 Asbury Ave.
Ocean City, NJ 08226
Call: (609) 399-0076
Email to: info@bergerrealty.com
Web: www.bergerrealty.com

Scan to see Property page.

