

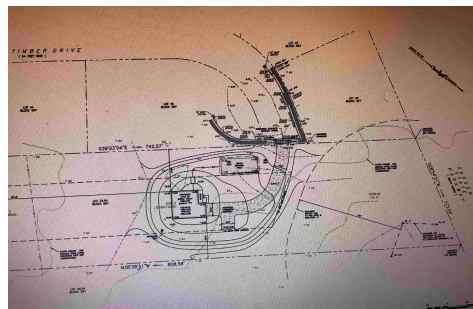


Berger Realty, Inc.  
3160 Asbury Avenue  
Ocean City, NJ 08226  
1-877-237-4371 / 609-399-0076  
info@bergerrealty.com



24 Timber, Palermo, NJ, 08230

Price \$269,900.00



#### PROPERTY DETAILS

Total Rooms	
Bedrooms	0
Baths Full	0
Baths Half	0
Year Built	
Type	Residential Vacant Lot
Block Number	597
Listing #	230422
Taxes	

#### COMMENTS

*Secluded Buildable wooded lot on a cul de sac off by itself but close to everything. 2.81 Acres part of a 4 lot sub division. Buyer is responsible for all permits, perk tests and engineer to be able to construct a single family home....*

#### PROPERTY FEATURES

#### CONTACT



Ask for Matthew Bader  
Berger Realty Inc  
3160 Asbury Avenue, Ocean City  
Call: 609-992-4380  
Email to: mhb@bergerrealty.com  
http://www.BADERCOLLINS.com

Scan to see Property page.

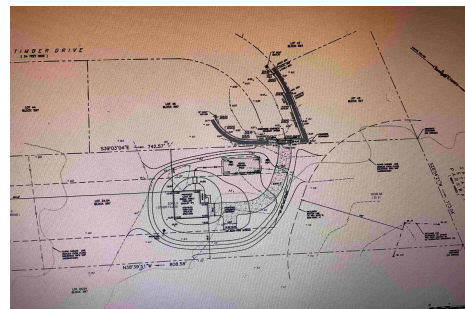


Berger Realty, Inc.  
3160 Asbury Avenue  
Ocean City, NJ 08226  
1-877-237-4371 / 609-399-0076  
info@bergerrealty.com



24 Timber, Palermo, NJ, 08230

Price \$269,900.00



#### PROPERTY DETAILS

Total Rooms	
Bedrooms	0
Baths Full	0
Baths Half	0
Year Built	
Type	Residential Vacant Lot
Block Number	597
Listing #	230422
Taxes	

#### COMMENTS

*Secluded Buildable wooded lot on a cul de sac off by itself but close to everything. 2.81 Acres part of a 4 lot sub division. Buyer is responsible for all permits, perk tests and engineer to be able to construct a single family home....*

#### PROPERTY FEATURES

#### CONTACT



Ask for Matthew Bader  
Berger Realty Inc  
3160 Asbury Avenue, Ocean City  
Call: 609-992-4380  
Email to: mhb@bergerrealty.com  
http://www.BADERCOLLINS.com

Scan to see Property page.

