

# Berger Realty

Since 1928



Berger Realty, Inc.  
3160 Asbury Avenue  
Ocean City, NJ 08226  
1-877-237-4371 / 609-399-0076  
info@bergerrealty.com



1511 Velvento, Cape May, NJ, 08204

Price \$1,575,000.00

### PROPERTY DETAILS

Total Rooms	0
Bedrooms	0
Baths Full	0
Baths Half	0
Year Built	
Type	Residential Vacant Lot
Block Number	1176.01
Listing #	214131
Taxes	8532.00

### COMMENTS

You can be part of Cape May's newest subdivision in the prestigious "Poverty Beach" section of Cape May. This lot exceeds the minimum lot size requirement in both lot frontage and lot area. Lot elevation meets City standards for FEMA compliance. City Water, City Sewer, Electric, Cable and Gas are all available to the lot. Minimum house size requirements and controlled...

### PROPERTY FEATURES

### CONTACT



Ask for Sara Varani  
Berger Realty Inc  
3160 Asbury Avenue, Ocean City  
Call:  
Email to: sev@bergerrealty.com

Scan to see Property page.



# Berger Realty

Since 1928



Berger Realty, Inc.  
3160 Asbury Avenue  
Ocean City, NJ 08226  
1-877-237-4371 / 609-399-0076  
info@bergerrealty.com



1511 Velvento, Cape May, NJ, 08204

Price \$1,575,000.00

### PROPERTY DETAILS

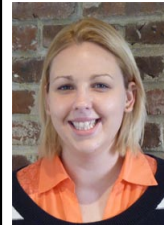
Total Rooms	0
Bedrooms	0
Baths Full	0
Baths Half	0
Year Built	
Type	Residential Vacant Lot
Block Number	1176.01
Listing #	214131
Taxes	8532.00

### COMMENTS

You can be part of Cape May's newest subdivision in the prestigious "Poverty Beach" section of Cape May. This lot exceeds the minimum lot size requirement in both lot frontage and lot area. Lot elevation meets City standards for FEMA compliance. City Water, City Sewer, Electric, Cable and Gas are all available to the lot. Minimum house size requirements and controlled...

### PROPERTY FEATURES

### CONTACT



Ask for Sara Varani  
Berger Realty Inc  
3160 Asbury Avenue, Ocean City  
Call:  
Email to: sev@bergerrealty.com

Scan to see Property page.

