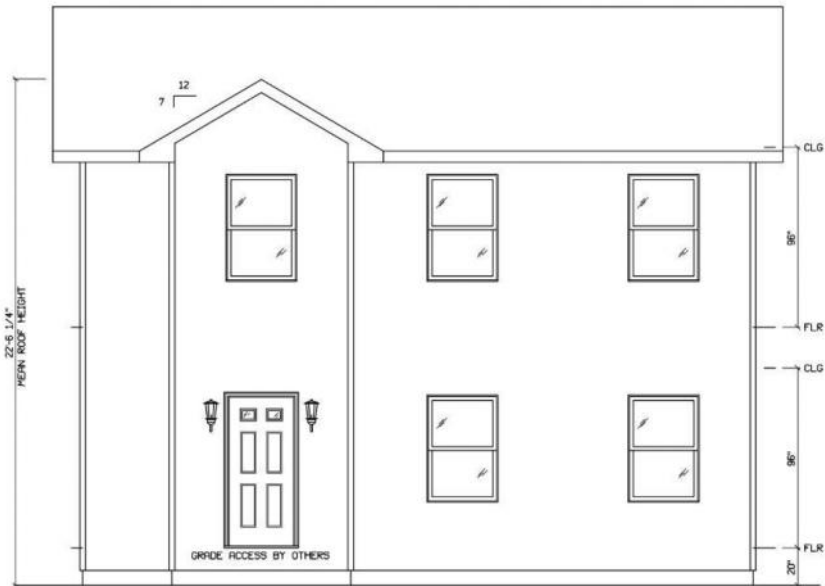
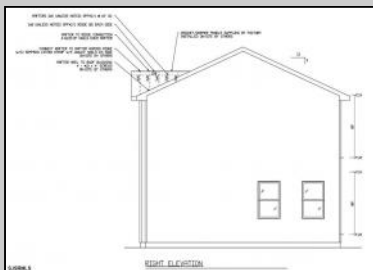
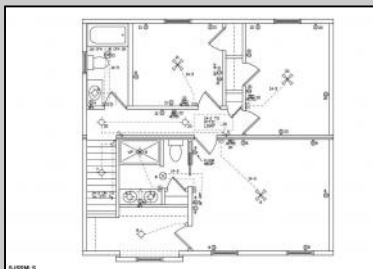
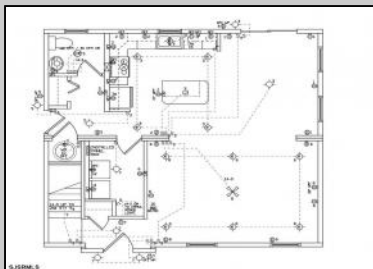
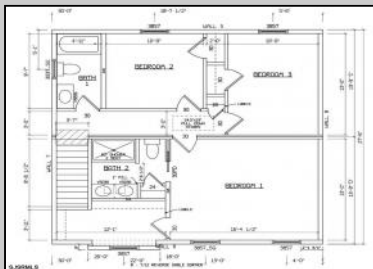
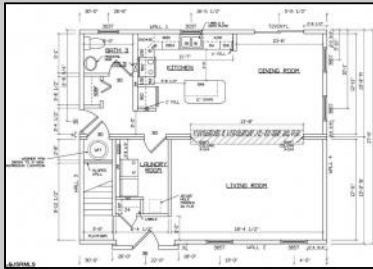




208 Ashland
 Egg Harbor, NJ 08234

Asking \$419,900.00



FRONT ELEVATION

SJSRMLS

COMMENTS

NEW CONSTRUCTION This one will be shore to please! A brand new construction home offering the perfect blend of modern finishes, functional design, and the rare opportunity to customize your dream home. This 3-bedroom, 2 and a half bathroom 2 story residence will feature approximately 1,660 square feet of thoughtfully designed living space, all situated on a 5,000 square foot lot. The open-concept floor plan flows seamlessly from the living area into the upgraded kitchen, which will include quartz countertops, premium cabinetry, and a stainless steel appliance package. The spacious primary suite includes its own private bath with ample closet space. Additional highlights will include luxury vinyl plank flooring throughout, gas heat and a gas stove. Top that off with a 10x10 deck and you're good to go! Buyers who act early may have the opportunity to select finishes and make certain customizations during the build process. Please note, final pricing may vary based on any buyer-selected upgrades not originally planned. The final look of the outside is subject to change. Don't miss this opportunity to own a brand-new, energy-efficient home in a convenient Egg Harbor Township location close to shopping, schools, and transportation.

PROPERTY DETAILS

Exterior Aluminum	OutsideFeatures Deck	ParkingGarage None	Heating Gas-Natural
Cooling Ceiling Fan(s) Central	HotWater Gas	Water Public	Sewer Public Sewer

