

# Berger Realty

Since 1928

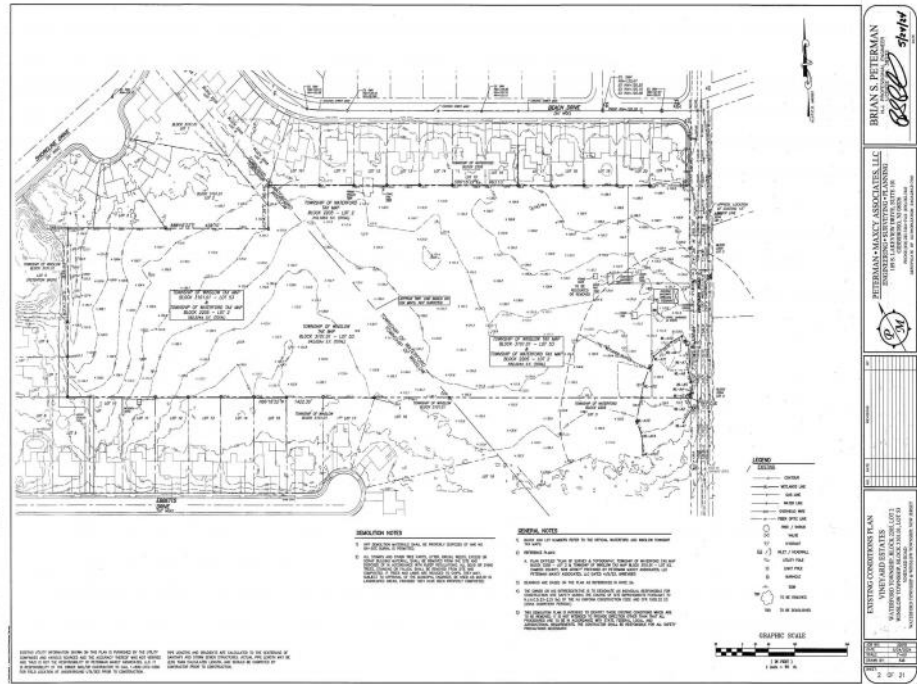


Berger Realty, Inc.  
3160 Asbury Avenue  
Ocean City, NJ 08226  
1-877-237-4371 / 609-399-0076  
info@bergerrealty.com



327 Vineyard  
Atco, NJ 08004

Asking \$1,300,000.00



## COMMENTS

Prime 12.9± acre residential development site on Vineyard Rd in Waterford Twp/Atco with engineering completed for a proposed 27-lot subdivision: 24 buildable single-family lots plus 3 basin/open-space lots (plans available upon request). Property is surrounded by established neighborhoods and is an ideal location for a new residential community in a low-inventory market. Mix of open and wooded land with road frontage on Vineyard Rd. Subdivision application has been submitted to the Pinelands Commission for a Certificate of Filing (COF); COF has not been issued as of listing date. Public utilities are in the area – buyer to confirm availability, capacity, and connection requirements with the township and Pinelands. Sale is for land only. Buyer is responsible for all final approvals, permits, and due diligence. 2 Structures currently on the property.

## PROPERTY DETAILS



Ask for Sean McGinnis  
Berger Realty Inc  
3160 Asbury Avenue, Ocean City  
Call: 609-399-0076  
Email to: smc@bergerrealty.com

