

Berger Realty

Since 1928

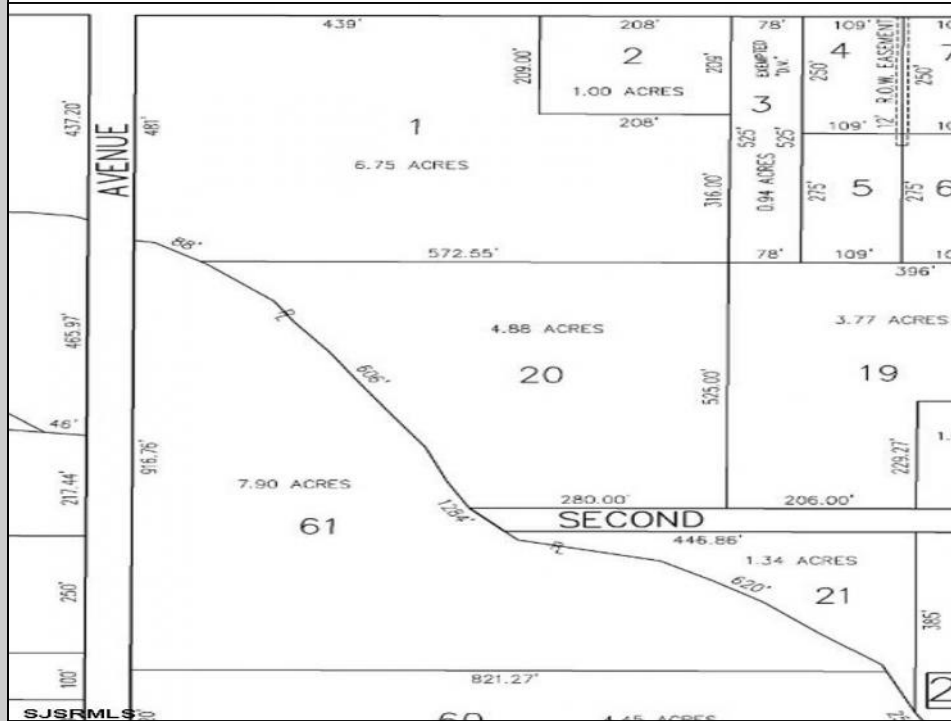


Berger Realty, Inc.
3160 Asbury Avenue
Ocean City, NJ 08226
1-877-237-4371 / 609-399-0076
info@bergerrealty.com



4014 Ridge
Egg Harbor Township, NJ 08234

Asking \$89,000.00



COMMENTS

7.9 Acres of pristine wooded residential land situated in the heart of Egg Harbor Township. Lovely stream forms one of long borders of property. Nature of property only appreciated by venturing deep into lot to see huge cedars and mature vegetation. RG 2 Zoning With over 900 feet of frontage, the potential for development is significant

PROPERTY DETAILS



Ask for Dale Collins
Berger Realty Inc
3160 Asbury Avenue, Ocean City
Call: 609-399-0076
Email to: djc@bergerrealty.com
http://www.BADERCOLLINS.com

