

# Berger Realty

Since 1928



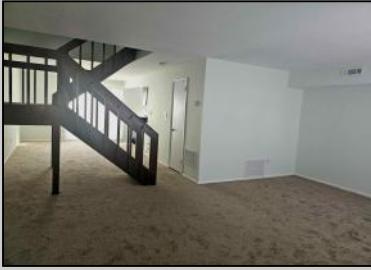
Ocean 17  
1670 Boardwalk  
Ocean City, NJ 08226  
609-391-0500

[oc17@BergerRealty.com](mailto:oc17@BergerRealty.com)



2127 Rhododendron  
Mays Landing, NJ 08330

Asking \$195,000.00



#### COMMENTS

Newly Remodeled Condo in The Woodlands – Prime Mays Landing Location Discover this beautifully remodeled and meticulously maintained 2-bedroom, 1 and 1/2 bathroom condo in the highly sought-after Woodlands Condominiums of Mays Landing. This gem has an oversized master bedroom with a walk in closet and 2 extra closets. Tons of storage space! Perfect as a primary residence or a vacation retreat, this charming home offers convenience and comfort just minutes from the Jersey Shore and Atlantic City's world-class casinos. Enjoy easy access to shopping, dining, and entertainment, all within close proximity. Commuters will appreciate the short walk to NJ Transit, making travel effortless. As a resident of The Woodlands, you'll have access to two pristine swimming pools, a clubhouse ideal for entertaining, a playground, and a scenic running track—perfect for outdoor enthusiasts. Don't miss this opportunity to own a move-in-ready home in a fantastic location! Schedule your private showing today.

#### PROPERTY DETAILS

ParkingGarage	Heating	Water	Sewer
None	Electric	Public Water	Public Sewer



Ask for Troy Eggie  
Berger Realty Inc  
1670 Boardwalk, Ocean City  
Call: 609-391-0500  
Email to: [tde@bergerrealty.com](mailto:tde@bergerrealty.com)

