

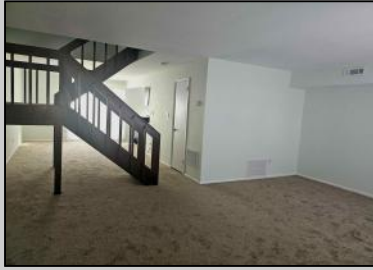
Berger Realty

Since 1928



Ocean 17
1670 Boardwalk
Ocean City, NJ 08226
609-391-0500

oc17@BergerRealty.com



2127 Rhododendron
Mays Landing, NJ 08330

Asking \$195,000.00



COMMENTS

Newly Remodeled Condo in The Woodlands – Prime Mays Landing Location Discover this beautifully remodeled and meticulously maintained 2-bedroom, 1 and 1/2 bathroom condo in the highly sought-after Woodlands Condominiums of Mays Landing. This gem has an oversized master bedroom with a walk in closet and 2 extra closets. Tons of storage space! Perfect as a primary residence or a vacation retreat, this charming home offers convenience and comfort just minutes from the Jersey Shore and Atlantic City's world-class casinos. Enjoy easy access to shopping, dining, and entertainment, all within close proximity. Commuters will appreciate the short walk to NJ Transit, making travel effortless. As a resident of The Woodlands, you'll have access to two pristine swimming pools, a clubhouse ideal for entertaining, a playground, and a scenic running track—perfect for outdoor enthusiasts. Don't miss this opportunity to own a move-in-ready home in a fantastic location! Schedule your private showing today.

PROPERTY DETAILS

ParkingGarage	Heating	Water	Sewer
None	Electric	Public Water	Public Sewer



Ask for Monica Raab
Berger Realty Inc
1670 Boardwalk, Ocean City
Call: 609-391-0500
Email to: msr@bergerrealty.com

