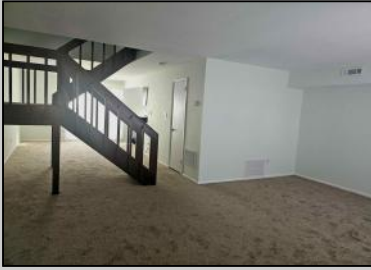




2127 Rhododendron
 Mays Landing, NJ 08330

Asking \$215,000.00



COMMENTS

Newly Remodeled Condo in The Woodlands – Prime Mays Landing Location Discover this beautifully remodeled and meticulously maintained 2-bedroom, 1 and 1/2 bathroom condo in the highly sought-after Woodlands Condominiums of Mays Landing. This gem has an oversized master bedroom with a walk in closet and 2 extra closets. Tons of storage space! Perfect as a primary residence or a vacation retreat, this charming home offers convenience and comfort just minutes from the Jersey Shore and Atlantic City's world-class casinos. Enjoy easy access to shopping, dining, and entertainment, all within close proximity. Commuters will appreciate the short walk to NJ Transit, making travel effortless. As a resident of The Woodlands, you'll have access to two pristine swimming pools, a clubhouse ideal for entertaining, a playground, and a scenic running track—perfect for outdoor enthusiasts. Don't miss this opportunity to own a move-in-ready home in a fantastic location! Schedule your private showing today.

PROPERTY DETAILS

ParkingGarage	Heating	Water	Sewer
None	Electric	Public Water	Public Sewer



Ask for Michael Devlin
 Berger Realty Inc
 3160 Asbury Avenue, Ocean City
 Call: 609-399-0076
 Email to: msd@bergerrealty.com

