



707 Periwinkle
Ocean City, NJ 08226

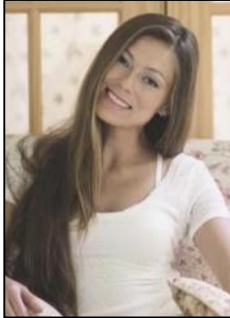
Asking \$849,000.00



COMMENTS

Lovingly maintained and fully furnished, this top-floor bay-front condo captures the best of Ocean City's coastal lifestyle with views of the bay, bridge, and surrounding waterways. From the moment you arrive, you'll feel the fun of waterfront living. Enjoy easy access to the community dock and marina, perfect for boating, paddle-boarding, or simply enjoying the water. A welcoming entry landing provides the perfect space to kick off your sandals and shake off the day's sand before entering the sunny interior. Immediately to the left, a bunk room featuring a full-size bed with a twin above, offers deck access and abundant natural light. The second bedroom also enjoys direct deck access and water views, making it a great retreat for guests. A beautifully tiled full bath serves both bedrooms. The main living area is open and inviting, designed for both entertaining and relaxation. Features include engineered hardwood flooring, a tiled gas fireplace, and premium Andersen sliding doors that frame the bay views while providing seamless indoor/outdoor flow. Custom Hunter Douglas blinds offer light control and privacy while maintaining the home's bright, airy feel. The kitchen is in excellent condition with granite countertops, ceiling-height cabinetry, and plenty of storage. Step outside to the spacious bay-view deck, complete with a retractable "Estate" awning and high-quality composite dining set, perfect for sunset dinners or morning coffee overlooking the water. Upstairs, the primary suite is a true retreat featuring cathedral ceilings, a private deck overlooking the pool and bay, and an ensuite bath with a Jacuzzi tub, tiled shower, and even a chandelier. Make this Bluewater retreat yours today!

PROPERTY DETAILS



Ask for Margarita Kobilina
 Berger Realty Inc.
 3160 Asbury Avenue, Ocean City
 Call: 609-399-0076
 Email to: mak@bergerrealty.com



Cooling	Hot Water	Water	Sewer
Ceiling Fan(s)	Electric	Public Water	Public Sewer
Central Electric			