

# Berger Realty

Since 1920

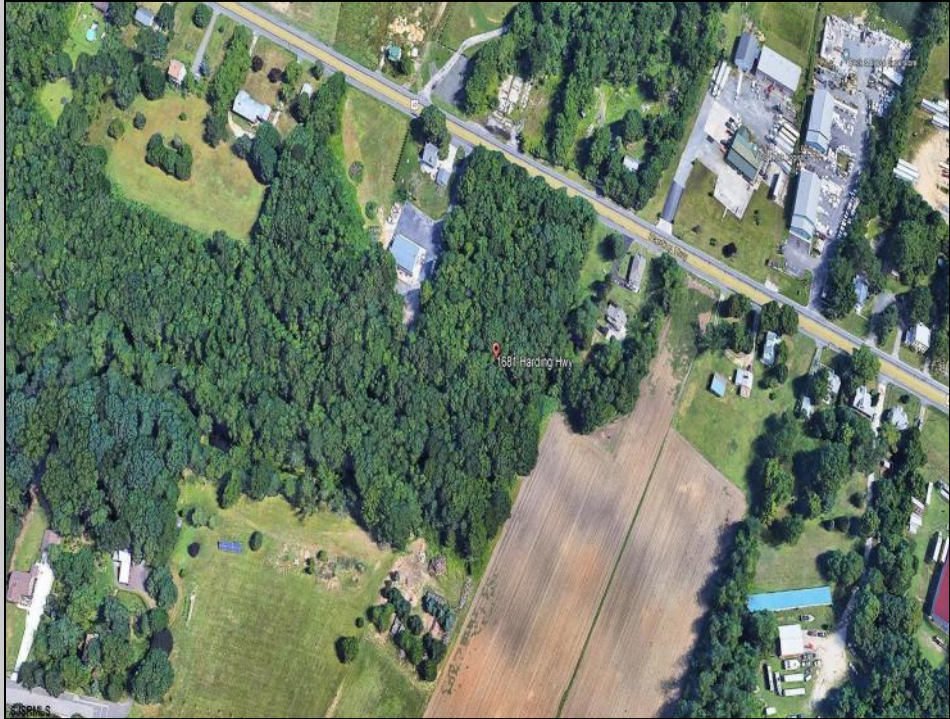


Berger Realty, Inc  
1330 Bay Avenue  
Ocean City, NJ 08226  
609-391-1330/609-391-1300  
✉ [info@bergerrealty.com](mailto:info@bergerrealty.com)



1681 Harding  
Newfield, NJ 08361

Asking \$144,500.00



#### COMMENTS

4.5 prime acres on Harding Highway zoned Highway Commercial. Bring your business to this busy corridor with plenty of exposure. Zoning opportunities can be diner, restaurant, bar, professional office, commercial business, etc. Buyer responsible for their own due diligence. Possible Residential or Mixed Use with Approval from Twp.

#### PROPERTY DETAILS



Ask for Joan S. Spencer  
Berger Realty Inc  
1330 Bay Avenue, Ocean City  
Call: 609-391-1330  
Email to: [jss@bergerrealty.com](mailto:jss@bergerrealty.com)

