

Berger Realty

Since 1928

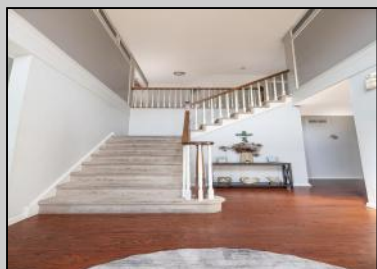
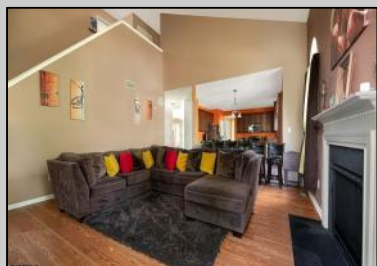


Berger Realty, Inc.
3160 Asbury Avenue
Ocean City, NJ 08226
1-877-237-4371 / 609-399-0076
info@bergerrealty.com



14 Strathmere Rd
Mays Landing, NJ 08330

Asking \$485,000.00



SJSRMLS

COMMENTS

MAJOR PRICE REDUCTION Welcome to this beautifully maintained 3,015 SQFT home tucked away in the quiet, Cedar Point community of Mays Landing. With 4 bedrooms, 2.5 bathrooms, a home office, formal living room, spacious family room with a cozy gas fireplace, dual staircases, a full basement, and a 2-car garage, this residence offers both functionality and comfort. Inside, you'll find hardwood floors, 9-foot ceilings, and a gourmet kitchen with granite countertops, 42" cherry cabinetry, stainless steel appliances, and a center island. The luxurious primary suite features a walk-in closet, dual vanities, a jetted soaking tub, and a custom shower, while the second full bath also includes dual vanities for added convenience. Step outside to your private backyard retreat—complete with a paver patio that lights up at night, a custom-built fire pit, and a shed for extra storage. Located just minutes from local restaurants, shopping, schools, Atlantic City, the Garden State Parkway, and the Jersey Shore, this home combines style, space, and community. Schedule your private showing today!

PROPERTY DETAILS

Exterior Vinyl	OutsideFeatures Fenced Yard Patio Shed Sidewalks Sprinkler System	ParkingGarage Attached Garage Two Car	OtherRooms Den/TV Room Dining Room Eat In Kitchen Laundry/Utility Room Library/Study Pantry
		Ask for Evelyn "Evie" Schweibinz Berger Realty Inc. 3160 Asbury Avenue, Ocean City Call: 609-399-0076 Email: ems@bergerrealty.com	
		Appliances Included Dishwasher Dryer Gas Stove Microwave Refrigerator Washer	
		Basement Unfinished	
		Heating Gas	



Cooling
Central
Multi-Zoned

HotWater
Gas

Water
Public

Sewer
Public Sewer