

# Berger Realty

Since 1928



Berger Realty, Inc.  
3160 Asbury Avenue  
Ocean City, NJ 08226  
1-877-237-4371 / 609-399-0076  
info@bergerrealty.com



1634 New  
Northfield, NJ 08225

Asking \$1,695,000.00

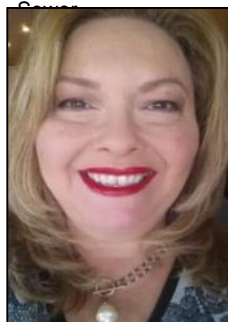


## COMMENTS

FOR SALE! PRIME LOCATION! This commercial property is currently configured for medical use, offering over 20 rooms, multiple reception areas, and a grand entry foyer. The ground-floor layout includes in-slab drainage and direct access from the parking lot for easy patient entry. Staff can enjoy dedicated break areas, and there's a bonus second-floor seminar space with additional storage. The property features ample on-site parking for 30+ vehicles and a prominent, high-visibility sign with multiple panels, ideal for advertising. Situated on a busy thoroughfare, this location ensures maximum exposure and convenience for your business.

## PROPERTY DETAILS

Exterior Block Vinyl	OutsideFeatures Sign	ParkingGarage 11 or More Spaces Off Street Paved	InteriorFeatures Display Windows Restroom Security System
Basement Slab	Heating Forced Air Gas-Natural Multi-Zoned	Cooling Central Multi-Zoned	Water Public



Ask for Theresa Maina  
Berger Realty Inc  
3160 Asbury Avenue, Ocean City  
Call: 609-399-0076  
Email to: tam@bergerrealty.com

