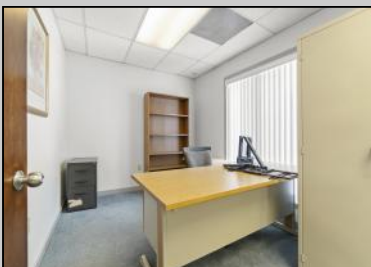


Berger Realty

Since 1928



Berger Realty, Inc.
3160 Asbury Avenue
Ocean City, NJ 08226
1-877-237-4371 / 609-399-0076
info@bergerrealty.com



410 Main
Pleasantville, NJ 08232

Asking \$349,900.00



SJSRMLS

COMMENTS

This modern commercial building is ideally located just off the Black Horse Pike in a high-traffic area with excellent visibility and easy access to Atlantic City, Downbeach, the Expressway, Parkway, and mainland communities. Move-in ready, it features a new roof, newer siding, security system, convenient delivery door, and multiple individual offices on both levels, including a full bath and pantry downstairs and a half bath upstairs. The property offers 12 off-street parking spaces with room to expand, and its flexible layout allows the rear warehouse/receiving area and upstairs offices to be rented separately, creating strong income potential or accommodating multiple tenants. Option to purchase partially furnished.

PROPERTY DETAILS

Exterior Vinyl	OutsideFeatures Fence Truck Door	ParkingGarage 11 or More Spaces Off Street Paved	InteriorFeatures Other (See Remarks) Restroom Security System Smoke/Fire Alarm Storage
Heating Forced Air Gas Natural	Cooling Central	HotWater Gas	Water Public



Ask for Matthew Bader
Berger Realty Inc
3160 Asbury Avenue, Ocean City
Call: 609-399-0076
Email to: mhb@bergerrealty.com
http://www.BADERCOLLINS.com

