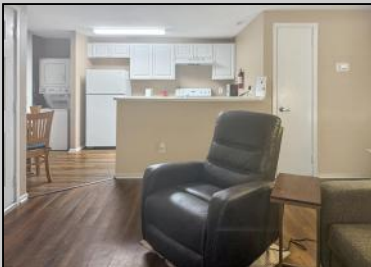


Berger Realty

Since 1928



Berger Realty, Inc.
3160 Asbury Avenue
Ocean City, NJ 08226
1-877-237-4371 / 609-399-0076
info@bergerrealty.com



250 Meadow Ridge
Galloway Township, NJ 08205

Asking \$180,000.00



COMMENTS

Cozy First-Floor Condo in the Heart of Smithville – Ready for You Now! Step inside this inviting first-floor retreat and discover a space designed for comfort, style, and easy living. The updated waterproof, scratch-resistant vinyl plank flooring flows seamlessly throughout, offering both durability and modern appeal. In the spacious primary bedroom, a generous walk-in closet keeps everything organized, while the warm, neutral tones throughout create an instantly cozy and welcoming atmosphere. On chilly evenings, relax by your woodburning fireplace and enjoy the comfort of a crackling fire. The kitchen blends function and charm with upgraded cabinets & countertops, along with updated appliances, including a dishwasher and stove, ready for all your cooking adventures. The updated bathroom boasts a polished and fresh feel. Live where the amenities shine, multiple pools, a fitness center, nature trails, playgrounds, sports courts, and a clubhouse offer endless opportunities to play, relax, and connect. Step outside and you're just across the street from Historic Smithville's charming shops, restaurants, and year-round festivals, making every day feel like a getaway. Whether you're a first-time homebuyer or looking to downsize without compromising lifestyle, this move-in-ready condo delivers both convenience and charm. Available now, start living the Smithville life today!

PROPERTY DETAILS

ParkingGarage	InteriorFeatures	Heating	Cooling
None	Fireplace(s)	Forced Air	Central
	Pets Allowed		



Ask for John Clarke
Berger Realty Inc
3160 Asbury Avenue, Ocean City
Call: 609-399-0076
Email to: jwc@bergerrealty.com

