

Berger Realty

Since 1928



Berger Realty, Inc.
3160 Asbury Avenue
Ocean City, NJ 08226
1-877-237-4371 / 609-399-0076
info@bergerrealty.com



110 Jeffers Landing
Egg Harbor Township, NJ 08234

Asking \$399,999.00



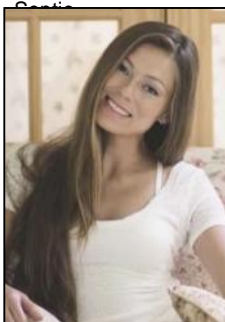
COMMENTS

Multi-family duplex in Egg Harbor Township, NJ! Nestled on a quiet street and just 10 minutes from the beautiful Ocean City beaches. Each unit offers spacious living, private entrances, and great rental potential. In addition to the two main units, there's a bonus loft/mother-in-law suite, adding even more value and flexibility. Featuring a brand new tankless hot water heater, this property is an excellent investment opportunity, whether you're looking to live in one unit and rent the other or grow your portfolio. A rare find in a prime location!

PROPERTY DETAILS

OutsideFeatures Shed	ParkingGarage None	OtherRooms Laundry/Utility Rm	Basement Crawl Space
Heating Baseboard Electric Gas-Natural Hot Water Oil	Cooling Window Units	HotWater Tankless-gas	Water Well

Sewer



Ask for Margarita Kobilianets
Berger Realty Inc
3160 Asbury Avenue, Ocean City
Call: 609-399-0076
Email to: mak@bergerrealty.com

