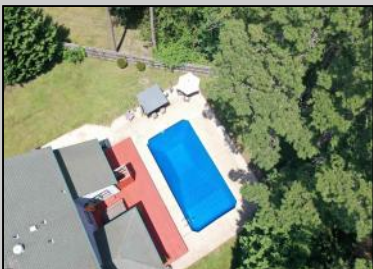


**801 Lexington  
Smithville, NJ 08205**

**Asking \$599,750.00**



#### COMMENTS

\*\*\*SMITHVILLE NEW LISTING ALERT\*\*\*4 BED 2.5 BATH\*\*\*BASEMENT\*\*\*IN-GROUND POOL W/ NEWER LINER\*\*\*NEWER WINDOWS\*\*\*NEW WATER TREATMENT SYSTEM\*\*\*REVERSE OSMOSIS FOR DRINKING WATER\*\*\*LANAI\*\*\*FENCED REAR YARD\*\*\*2 CAR GARAGE\*\*\*2 FIREPLACES\*\*\*CORNER LOT\*\*\*CUSTOM BAR @ POOL\*\*\*DUAL HVAC'S\*\*\*GUTTER GUARDS\*\*\*OFFICE/DEN\*\*\*2,670 SQ FT\*\*\* Lovely Lexington Ct-One of Smithvilles best kept secrets, Colony @ Smithville! 3 cul -de-sacs consisting of 24 homes! This layout offers a great foyer as you enter greeting you with its charm. To the right you will find an office with double doors and a bank of 3 windows overlooking the front yard. This could also be a workout room, bonus den, craft room or even a place for guests to stay! Opposite you will find a formal living room & dining room open to one another and incredibly spacious, floors are flanked with Brazilian Cherry floors offering warmth, comfort & beauty. Wood burning fireplace offers great focal point in this space. Dining room boasts vaulted ceilings and plenty of natural light. Kitchen is stunning with white Shaker style cabinetry topped with a gorgeous white quartz top. Stainless appliances accent this kitchen perfectly. Family room is open to this kitchen, featuring a gas fireplace and custom built ins on either side of the fireplace adding an intimate, cozy feel! Laundry room just off of this space doubles as a great mud room with great storage. Half bath rounds this space out. Lanai is just off of the family room/kitchen and offers a great view of the in-ground pool and bar area. This space is built for entertainment and ready to be enjoyed! En suite is oversized, offers dual closets and an incredibly renovated bath with all of the custom touches with today's style in mind. All 3 guest bedrooms as well as guest bath are comfortably sized. Basement offers newer mechanicals along with lots of space that can be a blank slate for whatever your needs may be! HOA is NOT part of the Smithville Community Association. \$300 annually covers trash, recycle & common grounds maintenance. For full video tour, navigate to realtor dot com and type in address 801 Lexington Ct Galloway NJ 08205!

#### PROPERTY DETAILS

Exterior	OutsideFeatures	ParkingGarage	AppliancesIncluded
Wood	Pool-In Ground Porch	Two Car Attached Garage	Dishwasher Gas Stove Self Cleaning Oven
AlsoIncluded	Basement	Heating	Cooling
Blinds	6 Ft. or More Head Room Full	Forced Air Gas-Natural Multi-Zoned	Central Multi-Zoned

# Berger Realty

• Since 1928 •



Berger Realty, Inc.  
3160 Asbury Avenue  
Ocean City, NJ 08226  
1-877-237-4371 / 609-399-0076  
✉ [info@bergerrealty.com](mailto:info@bergerrealty.com)



Inside Entrance

HotWater  
Gas

Water  
Well

Sewer  
Septic



Ask for Michael Devlin  
Berger Realty Inc  
3160 Asbury Avenue, Ocean City  
Call: 609-399-0076  
Email to: [msd@bergerrealty.com](mailto:msd@bergerrealty.com)

