

Berger Realty

Since 1928

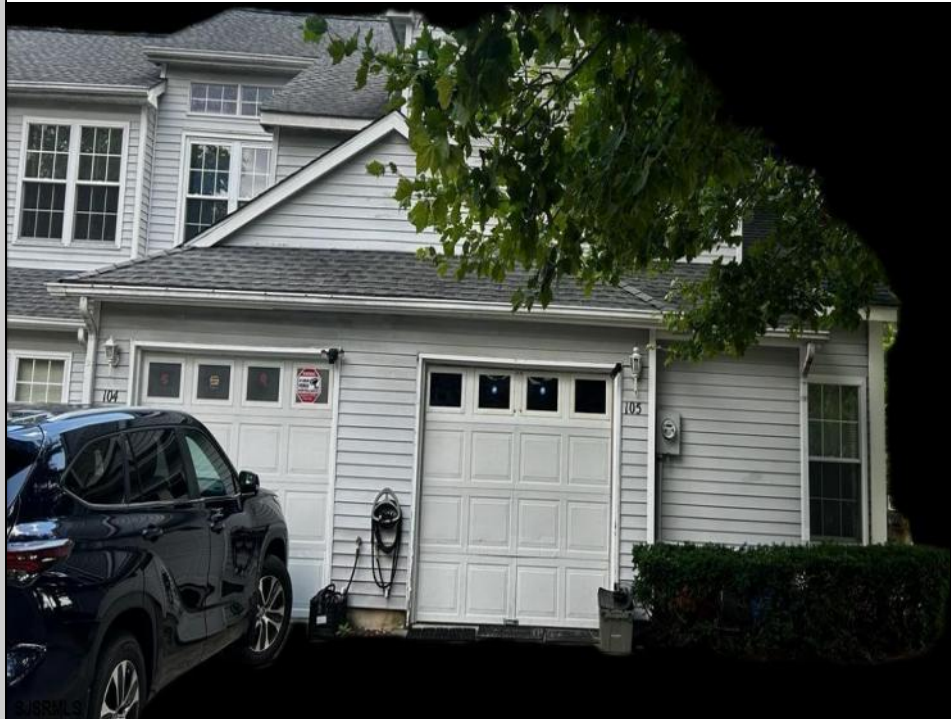


Berger Realty, Inc.
3160 Asbury Avenue
Ocean City, NJ 08226
1-877-237-4371 / 609-399-0076
info@bergerrealty.com



105 Heather Croft
Egg Harbor Township, NJ 08234

Asking \$295,000.00



COMMENTS

This is the largest end unit townhouse in this development with beautiful water views and the way the unit is positioned, it gives rays of sunlight which allows you to enjoy your new home even more. Your features are 3 bedrooms. 2.5 baths, vaulted ceilings, stainless steel appliances, fresh paint, hardwood floors, tile floors, granite countertops with a deep sink, fireplace, and a 1 car attached garage. Your end unit has a patio that overlooks the water which is a great place to hang out with family or friends during the summer while good food is cooking on your grill. You will love everything about this townhouse. The location is perfect with easy access to all major highways and shopping malls which is convenient for you. Call NOW to schedule a private showing and make this your home today! Emotional support dogs are allowed only with proper permits. This home is sold in a "AS IS" condition

PROPERTY DETAILS

Exterior	ParkingGarage	OtherRooms	InteriorFeatures
Vinyl	One Car	Den/TV Room	Cathedral Ceiling(s)
		Dining Area	Fireplace(s)
		Laundry/Utility Room	Wall to Wall Carpet
		Pantry	
		Storage Attic	
Heating	Cooling	HotWater	Water
	Central	Electric	Public Water



Ask for Thomas Byrne

Berger Realty Inc
3160 Asbury Avenue, Ocean City
Call: 609-399-0076
Email to: tfb@bergerrealty.com

