

Berger Realty

Since 1920



Berger Realty, Inc.
3160 Asbury Avenue
Ocean City, NJ 08226
1-877-237-4371 / 609-399-0076
info@bergerrealty.com



2320 New Rd
Northfield, NJ 08225

Asking \$375,000.00



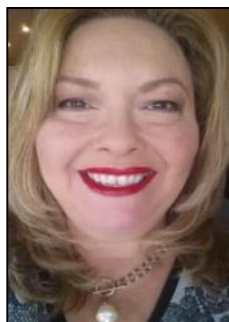
SJSRMLS

COMMENTS

CENTRAL LOCATION ON MAJOR HIGHWAY! Located in high traffic area of Northfield, this roughly 2000 SF building is situated on approx. .5 acres with 146x147 lot! Zoned commercial business leaves room for many possibilities. Local neighbors include Wawa, Conoco, several attorneys and doctors and other businesses. Building was previously used as mechanic shop - all lifts are still intact. On-site parking makes for an ideal site for most business ventures.

PROPERTY DETAILS

Exterior Block	Outside Features See Remarks Sign	ParkingGarage Off Street Other (See Remarks) Paved	Basement Slab
Heating Gas-Natural	Water Public	Sewer Public Sewer	



Ask for Theresa Maina
Berger Realty Inc
3160 Asbury Avenue, Ocean City
Call: 609-399-0076
Email to: tam@bergerrealty.com

