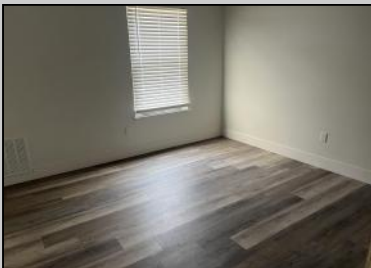


# Berger Realty

Since 1928



Berger Realty, Inc.  
3160 Asbury Avenue  
Ocean City, NJ 08226  
1-877-237-4371 / 609-399-0076  
info@bergerrealty.com



3108 Woodlands Drive  
Mays Landing, NJ 08330

Asking \$184,900.00



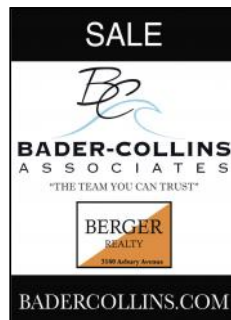
## COMMENTS

Completely renovated 2BD, 1 full bath first floor condo. This property is in excellent condition and backs to the street behind it, which is perfect for privacy. The kitchen has SS appliances, updated cabinets and countertops. There is laminate flooring throughout, and the bathroom has also been redone. The HVAC is newer and in great working order. Outside features a beautiful pool, playground and club house. This condo is located close to shopping, the expressway and restaurants. Easy to show and seller can close quickly.

## PROPERTY DETAILS

Exterior Vinyl	ParkingGarage None	OtherRooms Eat In Kitchen Primary BR on 1st floor Recreation/Family	InteriorFeatures Pets Allowed
Heating Electric	Cooling Ceiling Fan(s) Central	HotWater Electric	Water Public Water

Sewer  
Public Sewer



Ask for Bader - Collins Associates  
Berger Realty Inc  
3160 Asbury Avenue, Ocean City  
Call: 609-399-0076  
Email to: bca@bergerrealty.com  
http://www.BADERCOLLINS.com

