

# Berger Realty

Since 1928

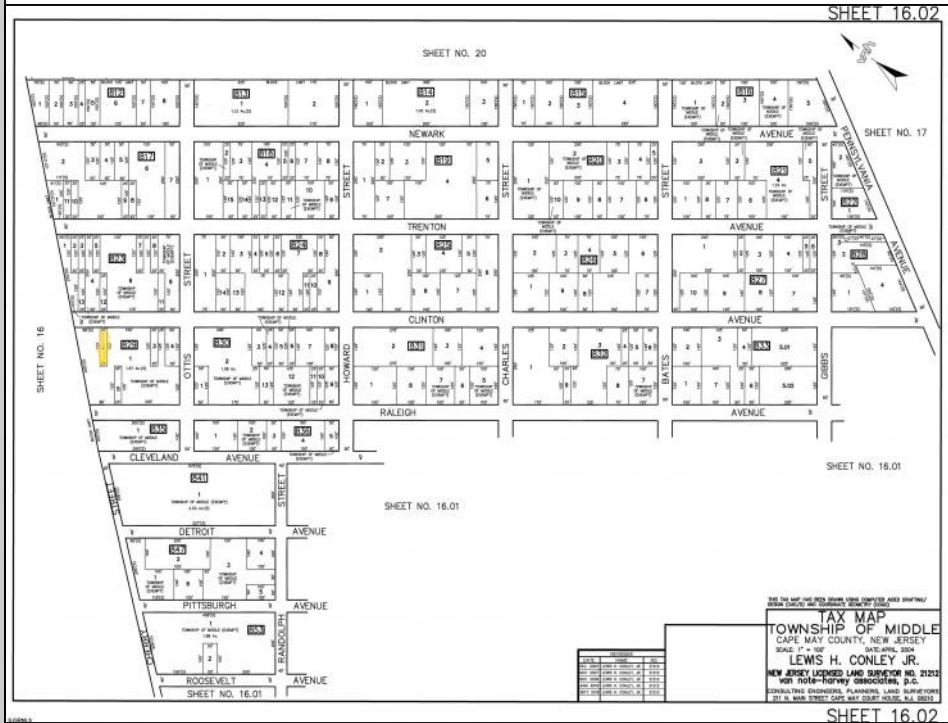


**Berger Realty, Inc**  
1330 Bay Avenue  
Ocean City, NJ 08226  
609-391-1330/609-391-1300  
[info@bergerrealty.com](mailto:info@bergerrealty.com)



**00 Clinton**  
**Cape May Court House, NJ 08210**

**Asking \$4,999.00**



### COMMENTS

The vacant lot at 00 Clinton Avenue offers a serene, wooded setting with potential to build under the constraints of Rural Conservation zoning. It's vital to proceed with due diligence—especially regarding environmental regulations and infrastructure—before planning any project. It is a virgin upland parcel with no existing structures or utilities. All permits, applications and approvals are at the buyer's expense. This lot is being sold in it's "as is, where is" condition. Located off of Pennsylvania Avenue between Detroit and Newark Avenues.

### PROPERTY DETAILS



Ask for Ludwik Samselski  
Berger Realty Inc  
1330 Bay Avenue, Ocean City  
Call: 609-391-1330  
Email to: [ls@bergerrealty.com](mailto:ls@bergerrealty.com)

