

Berger Realty

Since 1928

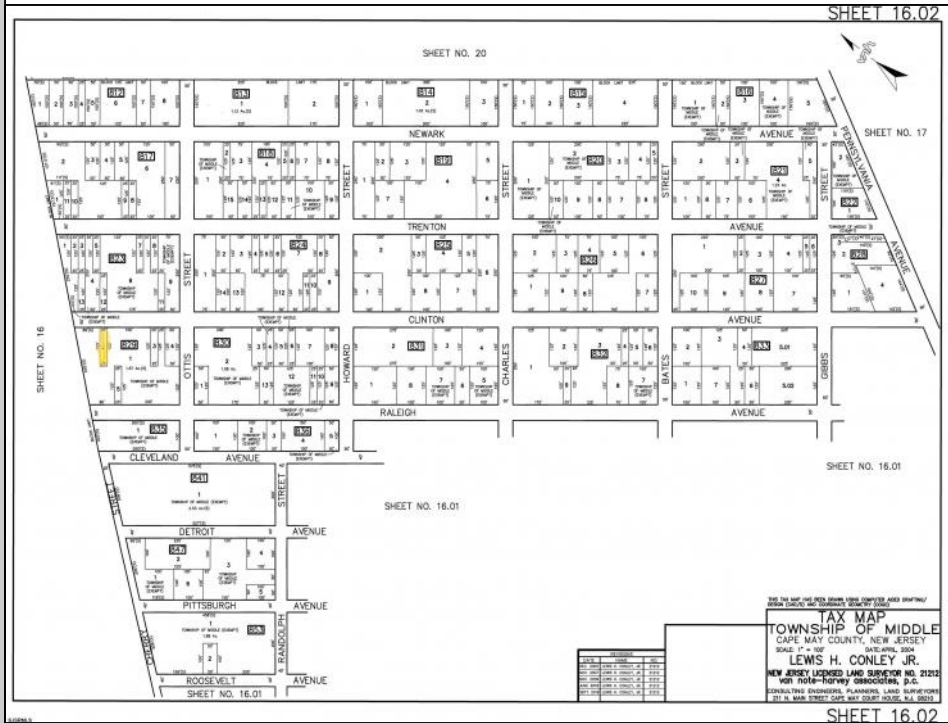


Berger Realty, Inc
1330 Bay Avenue
Ocean City, NJ 08226
609-391-1330/609-391-1300
info@bergerrealty.com



00 Clinton
Cape May Court House, NJ 08210

Asking \$4,999.00



COMMENTS

The vacant lot at 00 Clinton Avenue offers a serene, wooded setting with potential to build under the constraints of Rural Conservation zoning. It's vital to proceed with due diligence—especially regarding environmental regulations and infrastructure—before planning any project. It is a virgin upland parcel with no existing structures or utilities. All permits, applications and approvals are at the buyer's expense. This lot is being sold in it's \"as is, where is\" condition. Located off of Pennsylvania Avenue between Detroit and Newark Avenues.

PROPERTY DETAILS



Ask for Barbara Fasy
Berger Realty Inc
1330 Bay Avenue, Ocean City
Call: 609-391-1330
Email to: bf@bergerrealty.com

