

Berger Realty

Since 1928



Berger Realty, Inc.
3160 Asbury Avenue
Ocean City, NJ 08226
1-877-237-4371 / 609-399-0076
info@bergerrealty.com



15 Shelly St
Sicklerville, NJ 08081

Asking \$425,000.00

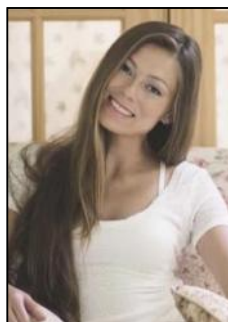


COMMENTS

Discover effortless elegance and comfort in this beautifully maintained Cypress Model Rancher in the desirable 55+ community of Four Seasons at Forest Meadows. Offering a spacious, thoughtfully designed layout, this residence features a formal dining room, a bright family room, and a charming sitting/conversation room—perfect for entertaining or relaxing. The versatile third bedroom can easily serve as a home office, den, or flex space to suit your lifestyle. Enjoy the benefits of a 2 car Garage & rare FULL-size basement with 10' ceilings, ideal for storage or future finishing, and a heating system less than a year old! Residents enjoy an exceptional range of amenities including a clubhouse, fitness center, pickleball court, swimming pool, lawn maintenance, snow removal & more—allowing you to enjoy a truly low-maintenance lifestyle. Ideally located close to shopping, dining, and major conveniences.

PROPERTY DETAILS

OutsideFeatures	ParkingGarage	Basement	Heating
Sprinkler System	Attached Garage	Full	Forced Air
	Two Car	Unfinished	Gas-Natural
Cooling	HotWater	Water	Sewer
Central	Gas	Public	Public Sewer



Ask for Margarita Kobilianets
Berger Realty Inc
3160 Asbury Avenue, Ocean City
Call: 609-399-0076
Email to: mak@bergerrealty.com

