

# Berger Realty

Since 1928

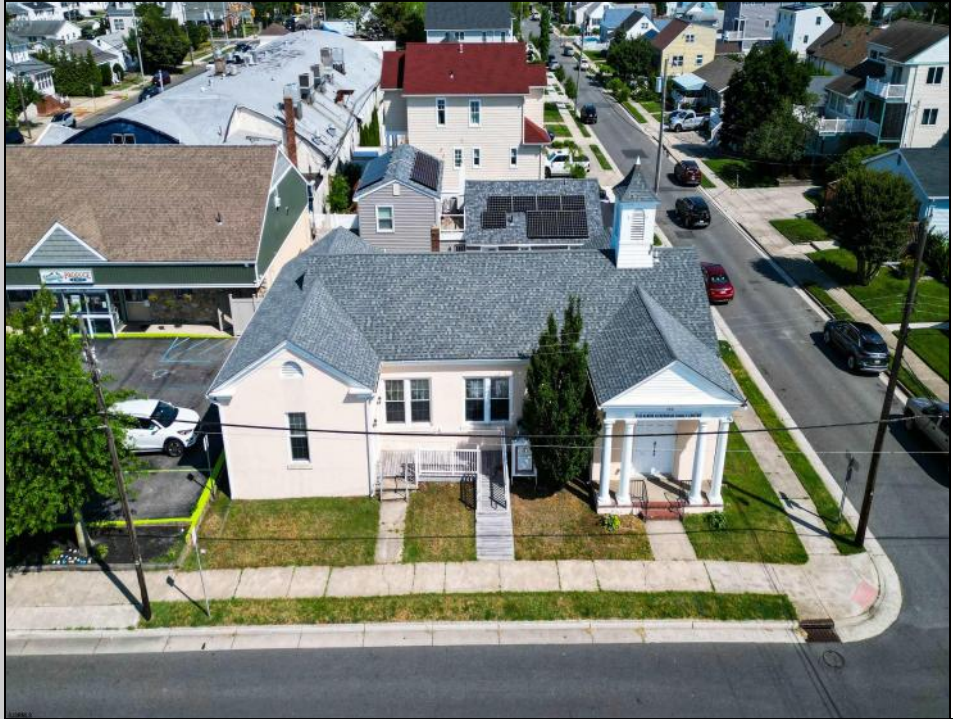


Berger Realty, Inc.  
3160 Asbury Avenue  
Ocean City, NJ 08226  
1-877-237-4371 / 609-399-0076  
info@bergerrealty.com



300 Dudley  
Ventnor, NJ 08406

Asking \$999,000.00



#### COMMENTS

Nestled in the heart of Ventnor Heights, this unique property sits on a beautiful 50x80 corner lot, offering a rare blend of character, space, and location. Formerly a church and now operating as a Chapel and a youth center, the building retains its charm while offering versatile potential for future use. Situated directly next to a local supermarket and surrounded by a vibrant community, this location provides excellent visibility and accessibility. Whether you're looking to continue its community-focused mission or repurpose the space for residential or commercial use (subject to zoning approvals), 300 N Dudley offers a one-of-a-kind opportunity in one of Ventnor's most desirable neighborhoods.

#### PROPERTY DETAILS



Ask for Frank Shoemaker  
Berger Realty Inc  
3160 Asbury Avenue, Ocean City  
Call: 609-399-0076  
Email to: fcs@bergerrealty.com

