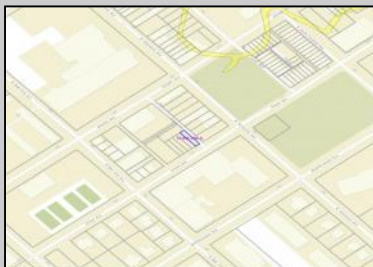
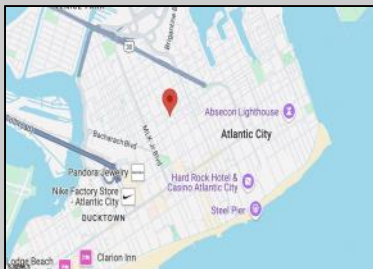


Berger Realty

Since 1928



Berger Realty, Inc.
3160 Asbury Avenue
Ocean City, NJ 08226
1-877-237-4371 / 609-399-0076
info@bergerrealty.com



1401 Drexel
Atlantic City, NJ 08401

Asking \$19,000.00



SJSRMLS

COMMENTS

This is a great opportunity to own a lot in Atlantic City, perfect for a multi-family development! Located in a growing area with easy access to local amenities, transportation, and the city's main attractions, this parcel offers excellent potential for residential development. The property is positioned within a short drive to the beach and boardwalk. With demand for housing on the rise in Atlantic City, this lot presents a solid investment opportunity for builders and developers looking to capitalize on the city's continued revitalization.

PROPERTY DETAILS



Ask for Denise Kelley
Berger Realty Inc
3160 Asbury Avenue, Ocean City
Call: 609-399-0076
Email to: dlk@bergerrealty.com

