

Berger Realty

Since 1928



Berger Realty, Inc.
3160 Asbury Avenue
Ocean City, NJ 08226
1-877-237-4371 / 609-399-0076
info@bergerrealty.com



336 Heather Croft
Egg Harbor Township, NJ 08234

Asking \$215,000.00

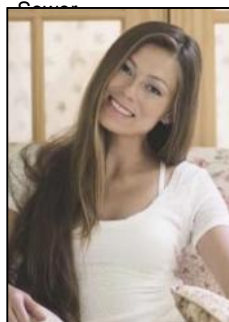


COMMENTS

Welcome to 336 Heather Croft – a beautifully updated first floor end unit featuring 2 bedrooms and 2 full baths. Step inside to find gorgeous laminate flooring, recessed lighting, and a stylish kitchen with stainless steel appliances and updated cabinetry. Enjoy the ultimate convenience with this unit's location just steps from the pool and clubhouse. Heather Croft is a scenic community with tranquil lakes, ponds, and tree-lined walking trails, offering peaceful living with modern amenities. Perfectly situated in the heart of Egg Harbor Township – just minutes from top shopping, dining, and entertainment. Easy access to the Garden State Parkway makes commuting to Philadelphia or NYC a breeze, and you're only 10 minutes from Atlantic City Airport and the best Jersey Shore beaches. A must-see!

PROPERTY DETAILS

Exterior Vinyl	ParkingGarage None	OtherRooms Eat In Kitchen	InteriorFeatures Master Bath Walk in/Cedar Closet
Heating Forced Air Gas-Natural	Cooling Ceiling Fan(s) Central	HotWater Electric	Water Public Water



Ask for Margarita Kobilianets
Berger Realty Inc
3160 Asbury Avenue, Ocean City
Call: 609-399-0076
Email to: mak@bergerrealty.com

