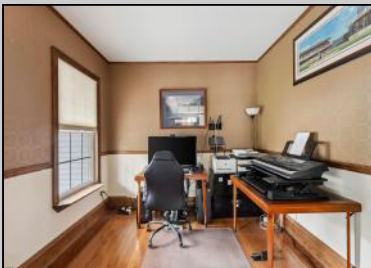
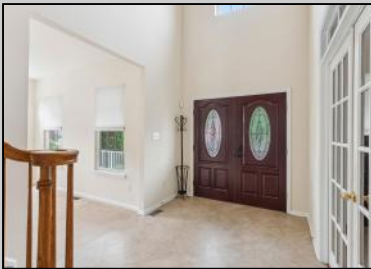


Berger Realty

Since 1928



Berger Realty, Inc.
3160 Asbury Avenue
Ocean City, NJ 08226
1-877-237-4371 / 609-399-0076
info@bergerrealty.com



95 Knights Bridge
Mays Landing, NJ 08402

Asking \$570,000.00



COMMENTS

Unlock the door to comfort and style at 95 Knights Bridge Way, Mays Landing! This contemporary gem boasts 5 spacious bedrooms and 3.5 baths stretched over an impressive 4,200 square feet. Fireplace, and a full finish basement that has plenty of room for a gym, craft room, family room, or extra family space! With private outdoor space, including two homes down from the community walking path. Dive into the luxurious features like a formal dining room perfect for lively gatherings, a cozy family room with a stone fireplace, and a basement that can double as a gym. Cook up a storm in the large eat-in kitchen complete with range, microwave, and dishwasher. Enjoy year-round comfort with air conditioning and the convenience of a double garage and included parking. With private outdoor space and large laundry room, this home is your personal retreat. The home also has a newer roof and solar panels that keeps bills at a low! Located near shopping, dining, and fun activities on the waterways, it's an offer you can't refuse.

PROPERTY DETAILS

| | | | |
|-----------------|---------------|-------------------|------------------|
| OutsideFeatures | ParkingGarage | OtherRooms | InteriorFeatures |
| Fenced Yard | Two Car | Dining Room | Walk In Closet |
| Porch | | Library/Study | |
| | | Recreation/Family | |

Basement



Heating
Gas-Natural

Cooling
Central

Water
Public

Ask for Jeremy Kershbaumer

Berger Realty Inc

3160 Asbury Avenue, Ocean City

Call: 609-399-0076

Email to: jek@bergerrealty.com

