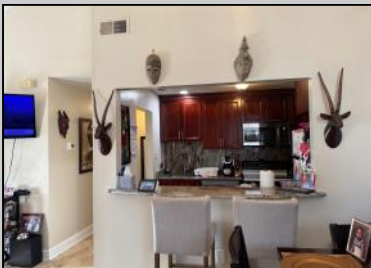


Berger Realty

Since 1928



Berger Realty, Inc.
3160 Asbury Avenue
Ocean City, NJ 08226
1-877-237-4371 / 609-399-0076
✉ info@bergerrealty.com



2725 Mimosa
Mays Landing, NJ 08330

Asking \$172,000.00



COMMENTS

The Woodlands in Mays Landing - This is the end unit Sussex model with no one living above you! Open floorplan with soaring cathedral ceilings. Remodeled kitchen with granite countertops and stainless steel appliances. Travertine marble tile floors throughout the living areas. Wall to wall carpet in the bedroom. There is a cute front porch for drinking your morning coffee. Attached exterior storage area. Pull down steps to the attic. Heat was converted to gas about 3-4 years ago. This unit is currently tenant occupied on a month to month lease. 24 hour notice preferred for all showings.

PROPERTY DETAILS

| | | | |
|--------------------------------------|--------------------------------------|---------------------------|--|
| Exterior Vinyl | ParkingGarage None | OtherRooms Dining Area | InteriorFeatures Cathedral Ceiling(s) |
| Heating Forced Air Gas-Natural | Cooling Ceiling Fan(s) Central | HotWater Electric | Water Public Water |
| Sewer Public Sewer | | | |



Ask for Lureen "Lani" Calcara
Berger Realty Inc
3160 Asbury Avenue, Ocean City
Call: 609-399-0076
Email to: luc@bergerrealty.com

