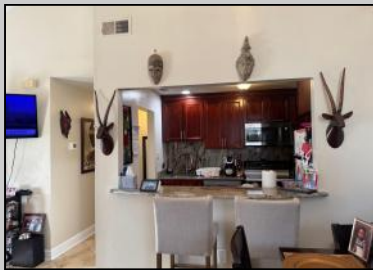


Berger Realty

Since 1928



Berger Realty, Inc
1330 Bay Avenue
Ocean City, NJ 08226
609-391-1330/609-391-1300
info@bergerrealty.com



2725 Mimosa
Mays Landing, NJ 08330

Asking \$172,000.00



COMMENTS

The Woodlands in Mays Landing - This is the end unit Sussex model with no one living above you! Open floorplan with soaring cathedral ceilings. Remodeled kitchen with granite countertops and stainless steel appliances. Travertine marble tile floors throughout the living areas. Wall to wall carpet in the bedroom. There is a cute front porch for drinking your morning coffee. Attached exterior storage area. Pull down steps to the attic. Heat was converted to gas about 3-4 years ago. This unit is currently tenant occupied on a month to month lease. 24 hour notice preferred for all showings.

PROPERTY DETAILS

Exterior Vinyl	ParkingGarage None	OtherRooms Dining Area	InteriorFeatures Cathedral Ceiling(s)
Heating Forced Air Gas-Natural	Cooling Ceiling Fan(s) Central	HotWater Electric	Water Public Water
Sewer Public Sewer			



Ask for Adelaide Misal
Berger Realty Inc
1330 Bay Avenue, Ocean City
Call: 609-391-1330
Email to: ahm@bergerrealty.com

