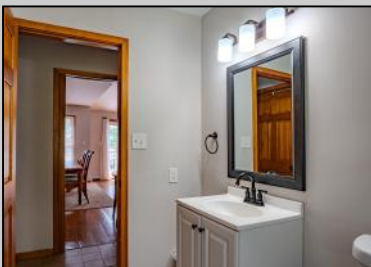


Berger Realty

Since 1928



Berger Realty, Inc.
3160 Asbury Avenue
Ocean City, NJ 08226
1-877-237-4371 / 609-399-0076
info@bergerrealty.com



970 Shirley
Erma, NJ 08204

Asking \$485,000.00



COMMENTS

Welcome to this custom-built 2-story home set on nearly half an acre in the heart of Erma. Featuring a vaulted living room with exposed beams and a brick wood-burning fireplace, this inviting property offers warmth, space, and character throughout. The kitchen includes a center island, gas range, and open flow to the dining area. Step outside to a backyard deck with a natural gas grill hookup — perfect for outdoor cooking and casual gatherings. Additional features include a central vacuum system, solar panel system (PPA), leveled hardscaping, 240V electric panel upgrade, and a garage for additional storage or workspace. Ideally located just minutes from Cape May beaches, wineries, and local amenities — a great blend of privacy and coastal convenience.

PROPERTY DETAILS

Exterior Wood	OutsideFeatures Deck Fenced Yard Shed	ParkingGarage Attached Garage Auto Door Opener One Car	OtherRooms Den/TV Room Dining Room Eat In Kitchen Laundry/Utility Room
InteriorFeatures Carbon Monoxide Detector Cathedral Ceiling Kitchen Center Island Smoke/Fire Alarm Storage	AppliancesIncluded Central Vacuum Dishwasher Dryer Gas Stove Microwave Refrigerator Washer	AlsoIncluded Curtains	Basement Crawl Space
Heating Baseboard	Cooling Central	HotWater Electric	
Sewer Public Sewer			

